

S &amp; C FILES

3D MARINES

0001076-67

## HEADQUARTERS

3d Battalion, 3d Marines  
 3d Marine Division (Rein), FMF  
 FFO, San Francisco, California 96602

1/JCR/rfb  
 5750  
 3 Mar 1967

From: Commanding Officer  
 To: Commanding Officer, 3d Marines  
 Subj: Command Chronology  
 Ref: (a) DivO 5750.1

Encl: *Filed* ✓(1) S-1 Chronology  
 ✓(2) S-2 Chronology  
 ✓(3) S-3 Chronology *w/Appendices - Operation Plan 1-67; Operation*  
 ✓(4) S-4 Chronology *Orders 1-67; 4 FRAG Orders 4-67 thru 7-67*  
*w/* ✓(5) Air Support and Defense Chronology  
*chron* ✓(6) Medical and Dental Chronology  
 ✓(7) Communications/Electronics Chronology  
 ✓(8) Artillery, Naval Gunfire, and Fire Support Chronology  
 ✓(9) Combined Unit Journal

1. In accordance with reference (a), the Command Chronology for this Battalion is submitted.

*S. Wawrzyniak*  
 S. WAWRZYNIAK  
 By direction

ORGANIZATIONAL DATA SHEET

1. Reporting Unit. 3d Battalion, 3d Marines, 3d Marine Division
2. Period Covered by Report. 1-28 February 1967
3. Date of Submission of Report. 3 March 1967
4. Commanding Officer. LtCol G. WILDER
5. Location Command Post at End of Period. Coordinates (982544)  
Quang-Tri Province, Vietnam
6. Map. VIETNAM 1:50,000 AMS Series L 7014, Sheet 6342I
7. Staff Assignments

Executive Officer

1-28 Feb67 Maj S. WAWRZYNIAK

S-1

1-28 Feb67 2dLt J. C. RALPH

S-2

1 Feb67 1stLt P. J. KAHLER

2-28 Feb67 2dLt C. R. MACIVER

S-3

1-28 Feb67 Maj H. L. LONG

S-4

1-5 Feb67 2dLt W. P. HURROBIN

6-28 Feb67 2dLt J. H. ADMIRE

8. Subordinate Unit Commanders

H&amp;SCo

1-28 Feb67 1stLt L. J. KIMBALL

Company "I"

1-28 Feb67 Capt T. A. STUMPF

Company "K"

1-28 Feb67 Capt J. D. GARRETT

Company "J"

1-28 Feb67 Capt J. W. RIPLEY

Company "M"

1-28 Feb67 Capt W. R. GRIGGS

## S-1 CHRONOLOGY

1. Personnela. Monthly Strength (average)

<u>MC Off</u>	<u>MC Enl</u>	<u>Navy Off</u>	<u>Navy Enl</u>
42	1190	3	50

b. Battle CasualtiesNon-Battle Casualties

KIA - 4  
WIA - 24  
DOW - 0

14

c. Rotations during Month

<u>MC Off</u>	<u>MC Enl</u>	<u>Navy Off</u>	<u>Navy Enl</u>
4	55	0	4

d. Replacements received

<u>MC Off</u>	<u>MC Enl</u>	<u>Navy Off</u>	<u>Navy Enl</u>
6	67	0	8

2. Staff Studies or Estimates. None3. Local News Papers. None4. Photographs. None5. Journal. No journal is maintained as such. A chronology record is maintained of all messages received in this command.6. Discipline, Courts-Martial, Office Hours

	<u>Pending</u>	<u>Complete</u>
a. Special Courts-Martial	1	2
b. Summary Courts-Martial	0	0
c. Bn Cdr Office Hours	0	5
d. Co Cdr Office Hours	0	21
e. There were no General Courts-Martial during the month of February.		

7. Morale, PX, Postal Affairs, Liberty, R&R

a. Morale is considered to be excellent to outstanding.

ENCLOSURE (1)

b. PX services were made available to three companies in the field through the mobile exchange. A sufficient supply of SP rations were available for the necessary health and comfort items.

c. Postal Affairs are satisfactory. This command is utilizing the Unit #9 Post Office.

d. Liberty was not authorized during the period.

e. The R&R program continues to be a major morale factor within this command. There were 103 out-of-country and 23 in-country R&R quotas utilized during this reporting period.

8. Civil Affairs, Military Government, Community Relations

None, due to the tactical location of the battalion during the period.

ENCLOSURE (1)



Appendix I.Daily Intelligence SummariesBEGCOORD.1 Feb 67  
011430H

972451

Kilo co. found an enemy base camp consisting of 3 large huts. One of which would house approximately 20 men. Main portion of hut is very old, but small areas appear to have been built within the last week. Search revealed a drinking cup and empty food canisters. Found a well worn trail leading into the hut from the North and from the hut to the Southwest and joins Route # 9. Trail shows sign of much foot traffic with NVA type sneaker tracks found.

011620H

972451

Kilo co. made contact with 20 NVA well equipped wearing Brown uniforms moving South. Artillery was called with good target coverage.

011620H

972451

Kilo co. was burning huts in the base camp when they observed 20 NVA in area. During fire fight 2 NVA were hit and fell. Also found possible HMM at 967447.

011730H

967568

Lima co. found an enemy 60mm mortar base plate.

011730H

974532

India observed 1 enemy. Called 81 mm mission with good target coverage, results unknown.

011840H

977488

Kilo co. made contact with an undetermined number of enemy. Too close for artillery mission.

Enclosure (2)

2 Feb 67 022220H	924533	Recon reported movement outside their position. Patrol used on-call artillery from 2100H to 2200H. Patrol used Illumination until 2230. Patrol reported 10 to 12 VC very close. Many lights 25-30 meters out from their position. Patrol received no incoming rounds.
3 Feb 67 030619H	952584	Recon observed lights and movement approximately 800 meters north of their position 952576. Artillery fired. Lights out. Results unknown.
031140H	965576	Lima Co. tripped a mine made from a ChiCom grenade buried approximately 3 inches.
031850H	924537	One enemy moving toward hill 100. Equipment and uniform not observed. 81 mm mission was called with excellent results. Good target coverage.
032028H	950455	Recon observed and called artillery on lights. Lights out results unknown.
4 Feb 67 041030H	985566	Lima Co. found a large enemy bunker and made search with negative results. Bunker was destroyed by a satchel charge. Dimensions of the bunker was 3 feet deep, 6 feet long. 5 feet wide with thick branches and 3 feet of earth covering the top.
041150H	929421	Recon observed and called artillery on 15 enemy. Gunship was directed to the area but could not observe enemy.

Enclosure (2)

041120H	992567	Lima Co. discovered 14 fresh holes 4 feet square, 2 feet deep set in a perfect V <sup>W</sup> ambush formation. Estimate holes to have been dug within the past 48 hours. Patrol found flat bottomed footprints and impression of a rifle butt smaller than that of an M-14 rifle would make.
041220H	961572	Lima Co. discovered 3 ChiCom grenades tied to a tree limb with a vine extended across the trail could have been actuated by stepping on the tree limb. Mine blown in place.
041615H	965577	Lima Co. tripped an unknown type of mine.
041755H	967568	Lima Co. while conducting a patrol found 3-60 mm mortar rounds with fuses, 1 carbine with magazine, 1 SMG magazine, and 15 rounds of carbine ammo.
042105H	991523	India Co. set in ambush approx. 100 to 150 meters from the P/B heard movement and enemy noises. Estimated from 3 to 5 enemy while waiting to spring ambush. P/B received 5 to 7 rounds small arms fire from a distance to approximately 200 meters. 1 incoming grenade encountered.
5 Feb 67 051245H	967567	Lima Co. received small arms fire from enemy ambush. Search revealed much gear and enemy positions. Found a 1 celled battery (burned) used possibly as a generator, 3 Chinese linked ammo. cans, machine gun positions constructed with 3 sandbags. Sandbags constructed from rice bags. Found many positions used often. All positions faced Lima Co. Co. Found also plastic mortar caps,

051245H ( cont )

1-60 mm mortar round, 1 canvas poncho torn. Found 1 small cave in the area. Following gear was found within the cave. 1 bandolier with 32 rounds of 7.62 mm ammo, 1 banana clip with 3 rounds AKA-47, 1 machine gun belt with 16 rounds, 1 hammock, 1 bottle of rice wine, and carbine rounds in every position. 2 armor piercing rounds found also.

051245H

033448

Kilo Co. patrol recieved 1 round sniper-fire from an estimated 4 or 5 VC moving in a Southeasterly direcdtion. Search of the area revealed negative results.

6 Feb 67  
060800H

047444

Information that villagers from the village of Phu Thann have moved in mass to La Cat. Villagers were to relocate after the Tet celebration.

061000H

971507

Mike Co. found 5 fighting holes 4x4x4 with bamboo and dirt covering the top of the fighting holes. Holes were estimated to be 1 to 2 months old.

061305H

971451

Kilo Co. fired on 2 enemy in an abandoned base camp. Enemy fled and Kilo gave chase, but lost them in the underbrush. Found 2 separate blood trails and evidence of a man being dragged was also found. Enemy wore Khaki shorts and black pajamas.

061315H

968451

Kilo Co. exchanged fire with a superior enemy force. AO requested artillery mission with unknown results.

Enclosure (2)

061655	979448	Kilo Co. observed and fired on 3 VC in black clothing carrying rifles. VC fled in a Southeasterly direction. Pursued and lost in the dim light of dusk and thick underbrush. One VC had had been hit and was being helped by another.
7 Feb 67 070945H	940500 940560 930570	National Police reported 1 VC battalion located in the vic of the 3 given coordinates. Battalion estimated to have four 82 mm.
071035H	969569	Lima Co found 6 Chinese ammo cans, 3-8mm armor piercing rounds, 1 AK-47 banana clip, 1 soft cover Vietnamese type, 1 Khaki trouser leg, 2 towels, parts of a battle dressing covered with blood.
071040H	984589	Mike Op observed and called artillery on an undetermined number of enemy. Distance too great to observe clothing and weapons. Enemy was moving to the Northwest.
071205H	960493	Mike Co. found an old enemy base camp with tunnels, hooches punji stakes. Estimated to be 1 year old. No recent activity in the camp. Capacity is approx. 60 men. Search with neg. res.
072015H	942571	Recon observed and called artillery on a bright light closing with their position. Lights out with results unk.
8 Feb 67 080530H	951568	Recon heard 5-6 enemy moving toward their position. Arty. was called and grenades thrown with neg. res.

Enclosure (2)

081130H	949568	Recon recieved small arms fire from an estimated 10 NVN. Patrol returned fire resulting in two NVN KIA 9 (conf )
0817,61	079621	Recon made contact with 50-60 NVN. Enemy fired Small arms fire and automatic weapons fire. Gunship and reaction force called.
081840H	0239	Kilo Co. reported for provisional recon that within grid square 0239 was sighted an estimated 700 NVN in two different groups. Enemy were fully equipped and wore Khaki and green uniforms. Took one prisoner during a fire fight.
082211H	886515	Recon was surrounded by an estimated 15-20 VC. Patrol heard raint noises and brush breaking all around their position. No fire was exchanged but an artillery million was called. Results Unk
082350H	957566	Flare ship lit up area of Rockpile 01. OP reported observing 2 figures moving south into the brush. After Illumination ceased 8-10 lights were observed.
9 Feb 67 091410H	985437	K Co. found an old campsite with signs of recent occupancy and improvements, would accomodate one platoon.
10 Feb 67 100830H	988569	M Co. discovered a series of caves. Search found 3 unidentified rounds, 5-7.62mm rounds, Chinese mine with a bell shaped top and Chinese markings. Mine blown in place.
101050H	963444	K Co. found a temporary bivouac site with a capacity of 50 men.

(Enclosure 2)



141050H cont.		1 metal basin, kindling wood for building a fire and two racks built from wood.
141115H	965566	Mike Co. made contact with approx. a squad of enemy. Broke contact with enemy. Results unknown.
141445H	963460	KiloCo. recieved automatic weapons fire while setting in. Could not observe due to fog. Estimate 15 enemy. Artillery called.
15 Feb 67 150800H	034452	Recon found old punji pits and 1 crude bear trap ( ineffective ). Bear trap was made of wood and punji sticks.
150930H	028455	Recon found 2 freshly dug fighting holes with 4 man capacity in all.
150945H	962451	Kilo found 3 base camps within 200 meters of one another. Camps were made of thached hooches. The third camp was bunkers with mortar pits and fighting holes. Capacity was about 1 platoon. Last occupied 2 weeks ago.
151510H	974556	Kilo found 3 bunkers dug into the side of a hill, constructed of bamboo poles. Estimate 5 people spent the night in the area.
16 Feb 67 161155H	965567	Mike Co. observed and fired artillery on 3 enemy. Good target coverage. Results unknown.
	950558	F.O. Rockpile spotted and called artillery, 40 mm, and 81 mm on 3 enemy wearing black clothing. Enemy moving Northeast.

11. Feb 67 111312H	991556	11th Engineers road grader detonated an unknown type mine, possible dud artillery round. Damage was to blade only.
111355H	991529	Lima Co. discovered and enemy campsite large enough to accommodate a fire team or squad unit. Found 6 fireplaces and 1 bamboo torch.
111930H	964533	Mike Co. observed and called artillery on lights on ridge line of the Razorback. Results unknown.
112300H	961601	AO observed enemy movement.
12 Feb 67 121235H	965568	Mike Co. made contact with approximately 1 squad of enemy. Enemy engaged by Mike Co. squad with small arms fire and 81 mm mission called. Enemy was wearing green and khaki uniforms and carried carbines.
13 Feb 67 131300H	965564 973499	Kilo Co observed 5 VC dressed in black clothes and carrying rifles.
131545H	974566	Mike Co. observed 1 enemy enter and leave hole. Artillery, tanks fired with excellent coverage results unknown.
131545H	975885	Mike OP observed 3 enemy wearing dark clothing and moving North Northwest. Artillery called. Results unknown.
14 Feb 67 141050H	965566	Mike Co. discovered in a large cave 1 pair of green USMC type jungle utility trousers with blood stains about 2 months old. 1 empty morphine syrette.

Enclosure (2)



17 Feb 67 171440H	899492	Lima Co found and destroyed a complex of enemy bunkers. Complex had 30 sleeping bunkers. Found maps, rice, food, tablets of paper, new NVA uniforms, paper with blood on it.
171610H	903506	India Co discovered a bunker and a trail leading west. Called artillery mission.
171700H	966500	India Co. observed 3 unarmed VC carrying packs. Fired small arms fire. Neg. results.
18 Feb 67 180750H	895503	India Co found 3 graves with bodies wrapped in blankets. Grave marker denoted date of death as 13 Jan 67.
181245H	903497	Lima Co captured 1 ChiCom (SMG)
181405H	965569	Mike Co discovered a cave complex brass and a possible mortar aiming stake.
180800H	914514	India Co. found 2 NVA uniforms, maps and a notebook.
180900H	903497	Lima Co apprehended 1 VN when destroying base camp. VN had no ID card.
180900H	903490	Lima Co captured 100 pounds of rice origin unknown.
19 Feb 67 190800H	906498	Lima Co found 2 new 82 mm mortars complete.
190800H	906498	Lima Co found an unknown number of 81/82 mm mortar rounds, unknown number of rocket rounds, 4 pounds of demolitions, 6 anti-tank rounds, all ChiCom.

Enclosure (2)

190900H	917514	India Co found and destroyed 75 meters of long wooden fence along the trail.
190950H	906498	Lima Co. recieved small arms fire from an unknown number of enemy. Called artillery.
191440H	903498	Lima Co found 4 boxes anti-tank rockets, 23 cases ChiCom grenades, 3 cases 82 mm mortar rounds, 5 cases of $\frac{1}{2}$ pound blocks of demolitions.
191515H	907499	Lima Co found 25 ChiCom gren. 1 claymore mine, and 25 sets of USMC utilities.
191615H	917508	India Co. found and destroyed small camp with heavily, fortified fighting holes and 5 feet long trench.
20 Feb 67 200400H	107635 102624	2d ARVN regiment reports 1 VC Battalion at listed coord.
21 Feb 67 210800H	917522	Lima Co found 100 canisters containing vitamin pills. ( vitamin C&B )
211200H	898474	Recon observed camouflaged enemy with vegetation. HUIE made rocket run that resulted in 2 enemy KIA and a concurring secondary explosion.
22 Feb 67 221200H	972512	India Co observed and fired small arms fire at one VC. VC fled. Search revealed negative results.
221910H	883496	Recon observed and directed a gunship which fired rockets and 50 caliber on a suspected NVA position.

Enclosure (2)

250001 to 250001H		Negative Contact.
250915H	955579	Mike Co heard 3 rounds small arms fire overhead. Called 81 mm mission with good target coverage. Search with negative results.
251445H	959613	Mike Co. DP observed 5 enemy moving toward hill 434 in a Northernly direction. Clothing and equipment not observed. Artillery mission called.
260001 to 260001		Negative Contact.
271330H	962573	Lima Co. found 29 ChiCom grenades, 13-82 mm mortar rounds, 13-82 mm mortar fuzes, 1 footlocker, 1 set messgear, empty grenade box, 1 bamboo basket, 1000 rounds of linked ammo and 12 unserviceable US type helmets.
271330H	962573	Lima Co found and destroyed a cave 6x9x3 with 2 entrances, 12 fighting holes and 1 shack 12x12.
271010H	953572	India found and destroyed 1 hut 4x4.
28 Feb 67 281040H	943583	Command group found and disarmed 1 mine grenade with trip wire.
281400H	955587	Lima Co. found 9*-82 mm mortar rounds, 35 assorted fuses, 2000 rounds 7.62 mm, 22 ChiCom grenades, 4 RPG rkt. rounds, 3 grenades, 3 green flare cylinders, 2 mags. (SMG ), 4 AK-47 rds, 1 banana clip and 6 BLWL in a cave 4x4x15.

Enclosure (2)

# 1. Significant Events.

1 February 1967. At 011610H coordinates (986531). Company India patrol searched area where "B" Battery (SP) USA observed one enemy late yesterday. Patrol reported negative contact.

At 011430H coordinates (972451). Company Kilo patrol discovered an enemy ~~on~~ <sup>60</sup> size base camp consisting of three large huts one of which would house about 20 men. Main portion of hut very old, but small areas appear to have been built within the last week. Complete search revealed drinking cup and empty food containers. Found trail that leads to the huts to be well used about two feet wide. Trail also leads to Route 9.

At 011620H coordinates (972451). Company Kilo patrol made contact with 20 NVA, well equipped and wearing brown uniforms, moving south. Artillery mission called in vicinity of above coordinates with good target coverage. Results unknown.

At 011700H coordinates (972451). Company Kilo patrol was burning enemy base camp when they observed 20 NVA in area. During fire fight two NVA were hit and fell. Artillery fire mission called with excellent target coverage. Patrol searched area with negative results.

At 011945H coordinates (980447). Company Kilo platoon linked with Company Kilo patrol at above time and coordinates. Negative contact.

At 011730H coordinates (967568). Company Lima patrol found enemy 60mm mortar base plate in fair condition. Area in vicinity searched with negative results.

At 011745H coordinates (967568). Company Lima patrol found enemy 60mm mortar base plate. Item is same as previous one found and in better shape.

At 011915H coordinates (974532). Company India ambush observed one enemy at above time and coordinates. Due to poor light no description could be made. 81mm mortar fire mission called with excellent target coverage. Area searched with negative results.

2 February 1967. Summary of Company Kilo action on 1 February 1967. Initial contact was made with 20 NVA wearing khaki uniforms, carrying packs and weapons. During initial shots Company Kilo patrol saw two enemy fall. NVA unit withdrew. Artillery fired five missions. Company Commander with two platoons (-) moved overland and effected link up. During this time contact was made with VC dressed in black PJ's. Company Commander established one platoon in a ambush at deserted village coordinates (983438). Company Commander with patrol and remainder of 2nd Platoon returned to Company CP. Platoon in ambush site returned to Company CP at 020400H without further enemy contact.

At 021815H all elements of Company Mike returned to 3d Battalion, 3d Marines CP.

ENCLOSURE (3)



3 February 1967. At 031140 coordinates (965576) Company Lima patrol detonated a rigged Chi Com grenade along side of trail. Grenade was camouflaged. One Marine KIA. Marine was Air Med Evac at 031235.

At 031850 coordinates (974537) Co India observed one enemy moving in the direction of Hill 100. Uniform and equipment not observed. 81mm mortar mission called with excellent target coverage. Squad sent to search area with negative results.

4 February 1967. At 040600 coordinates (982545) Company India commenced its operation.

At 040626 coordinates (012455) Company Kilo commenced its operation.

At 040820 coordinates (981542) "B" Btry 40th Artillery USA displaced to Ca Lo in support of Company Kilo. "B" Btry arrived at Company Kilo CP at 040905.

At 041030 coordinates (985566) Company Lima patrol found large enemy bunker. Search of the area made with negative results. Patrol destroyed bunker.

At 041126 coordinates (963567) Company Lima patrol discovered possible VC bunker, 5 feet wide, 6 feet long and 3 feet deep covered with thick branches and 3 feet of earth. Patrol destroyed bunker.

At 041220 coordinates (961572) Company Lima patrol discovered a chi com grenade tied to a tree with a vine extended across trail, 18 inches of the ground. Grenade destroyed in place.

At 041615 coordinates (041615) Company Lima patrol had one member of the patrol wounded in the right thigh from an undetermined type of explosive device. Air Med Evac completed at 041735.

At 041755 coordinates (967568) Company Lima Patrol discovered 5 60mm mortar rounds, 1 carbine magazine, 1 machine gun magazine, 15 rounds of carbine ammo. All items listed above were destroyed by patrol.

At 042105 coordinates (991523) Company India ambush set in approximately 150 meters from the Platoon Patrol Base (IPB) heard movement and noise estimated from 3-5 people. While awaiting to spring ambush the IPB received 5-7 rounds of small arms fire from an estimated distance of 300 meters. Rounds came from the S.E. At the same time the ambush site received 1 incoming grenade. Artillery mission called with good target coverage. Results unknown.

At 042140 coordinates (991523) Company India Platoon Patrol Base (IPB) received 20 rounds of small arms fire from S.E. Artillery mission called with good target coverage. Results unknown.

5 February 1967. At 051245 coordinates (033448) Company Kilo patrol received 1 sniper round from the S.E. Observed 4-5 VCS approximately 400 meters running in S.E. direction. Area search with negative results.

At 051245 coordinates (967657) Company Lima patrol located enemy ambush point. Search of area revealed small quantities of enemy equipment and ammo. All equipment and ammo destroyed.

ENCLOSURE (3)

6 February 1967. At 060600H Company Mike commenced Recon in Force operation.

At 060900H coordinates (971507) Company Mike Patrol discovered 5 covered fighting holes one or two months old. Patrol demolished roofs and destroyed holes as much as possible.

At 061305 coordinates (968451) Company Mike Squad Patrol spotted 5 persons with weapons, wearing shorts, sandals and packs they were not within rifle range. Patrol started pursuing the enemy and made contact with an undetermined force. During fire fight one Marine WIA. Patrol lost contact with enemy.

At 061430H coordinates (966452) Company Kilo Squad Patrol point sighted five enemy with packs and weapons. Patrol could not observe type of equipment. Patrol opened fire at enemy. Enemy fled back down trail. Patrol gave chase but lost contact.

At 061526 Company Mike Squad Patrol while searching area where contact was made with enemy. Found 2-100 pounds of rice which they destroyed.

At 061345 coordinates (971451) Company Kilo Patrol while searching area saw two enemy, one in khaki shorts and one in black clothing. Patrol took enemy under fire one enemy was hit and fell, the other was wounded. In attempting to close on the enemy Patrol came under A/W fire. Fire returned with S/A and M-79. Firing lasted one minute. Patrol search area found two separate trails of blood. Patrol followed blood trail until trail was lost.

7 February 1967. At 071015H coordinates (984589). At above time and coordinates Company Mike PI observed two enemy moving into treeline. Distance too far to observe clothing and weapons. Enemy moving North East. Artillery mission called with excellent target coverage. Results unknown.

At 071110H coordinates (960493) Company Mike Patrol found an old enemy base camp with tunnels, huts and punji stakes. Camp estimated to be one year old. No recent activity in the camp. Search made with negative results.

At 071035H coordinates (969569) Company Lima Patrol found 6 Chinese ammo cans (empty), 3 8mm AP rounds, 1 AK-47 magazine and old discarded clothing, all equipment destroyed.

8 February 1967. No significant events.

9 February 1967. No significant events.

10 February 1967. At 100830H coordinates (968569) Company Mike Patrol discovered a series of caves at above time and coordinates. Patrol search the caves and found 3 unidentified rounds, 5 7.62mm rounds and 1 Chinese type mine. Mine was blown in place, followed with a secondary explosion. Cave was again searched with negative results.

At 100930H coordinates (960424) Marine in Company Kilo Patrol had a accidental discharge, wounding a fellow Marine in the right hip and right forearm. Marine was Med Evac at 101026.

ENCLOSURE (3)

10 February 1967. At 101050 coordinates (963414) Company Kilo Patrol found temporary bivouac area which would hold 50-75 people. Patrol made search of area with negative results.

At 101315H coordinates (967564) Company Mike Patrol had a non-battle casualty, one Marine fell hurting his back. Med Evac completed at 101650H.

11 February 1967. At 111300H coordinates (991557) Company Mike reported seeing explosion at above coordinates. Squad sent to investigate and found dozer had hit what appears to be a mine. Dozer received a damage blade. Explosion device was 10 feet off the road. Three Engineer personnel received minor wounds, Med Evac not requested.

12 February 1967. At 120725H coordinates (974566). Co Mike was firing their counter mortar plan when an explosion occurred close to perimeter wounding one Marine in the right arm. Investigation revealed one of the tanks had a premature explosion. Marine was Med Evac at 120930.

At 121235H coordinates (965568). Company Mike Patrol made contact with approximately 1 enemy squad. During fire fight one Marine was wounded. Patrol lost contact with enemy.

At 121530H coordinates (965567). Company Mike Patrol searching area for enemy patrol spotted approximately 12 enemy dressed in green khaki uniforms armed with carbines moving west. 40mm fire mission called in Grid Squares (9556) and (9557). Area searched with negative results. Company Mike Patrol member WIA was Med Evac at 121400H.

At 122310H Company Kilo departed its CP to effect blocking position for Battalion (-) Operation.

13 February 1967. At 130500H Coordinates (001453). Company Kilo while crossing bridge in route to assigned position has one non-battle casualty. Marine fell from bridge. Marine returned to Company Kilo CP.

At 130800H coordinates (967448). Company Kilo arrived at assigned blocking force position.

At 131300H coordinates (973449). Company Kilo spotted 5 VC walking along trail coming from the NW. VC were dressed in black clothing carrying rifles. VC stated moving east. When it was evident VC were not coming into blocking position, Artillery mission called with excellent target coverage. Results unknown.

At 131545H coordinates (974566). Company Mike patrol spotted one enemy at coordinates (982583) move into a hole and come out. Distance too far to get description. Tanks and Artillery mission called on target with excellent target coverage. Results unknown.

At 131630H coordinates (971451). At above time and coordinates Company Kilo established a Company Patrol Base.

At 131815H coordinates (975585). Company Mike OP observed 3 enemy in dark clothing traveling NNW. Due to light and short period of observation could not determine if enemy carried weapons. Artillery mission called on target. Results unknown.

ENCLOSURE (9)



14 February 1967. At 141115H coordinates (965566). Company Mike Patrol made contact with approximately squad of enemy. During fire fight one Marine was killed. Patrol broke contact with enemy. Due to the close proximity of enemy and weather supporting arms were not used.

At 141300H coordinates (965966). Company Company Patrol called in Artillery fire with excellent target coverage. Results unknown.

At 141425H coordinates (963460). Company Kilo patrol was moving into blocking position when came under enemy small arms fire. Patrol could not observed enemy but estimated approximately 15. Patrol called Artillery fire mission with excellent target coverage. Results unknown.

At 141710H coordinates (974566). Company Mike Patrol returned to Company CP with their KIA. Another member of the patrol was slightly wounded not requiring Med Evac.

At 141700H coordinates (961461). Company Kilo ambush was moving thru draw when they came under enemy A/W fire from an estimated 15 enemy at coordinates (965462). Ambush returned fire, called Artillery mission and employed unit 60mm mortars. Area was checked for enemy causality with negative results.

At 142010H coordinates (962461) Company Kilo establish a Company Patrol Base

15 February 1967. At 150925H coordinates (981542). Neutralization fires commenced on the Razor Back.

At 150920H coordinates (981451). Company Kilo found 3 base camps within 200 meters apart. Two of the camps were thatched type huts and very old. The third camp was constructed bunkers with mortar pits and fighting holes. Would hold approximately 1 platoon. Estimated last occupied one week ago. Search made of all camps with negative results.

At 151145H coordinates (981542). 3d Battalion, 3d Marines ceased artillery fire mission on Razor Back.

At 151510H coordinates (970490). Company Kilo after many attempts was able to establish radio contact. Company Commander reports that since his last report he has followed the known trail thru area, it is no longer a major route. Found 3 bunkers dug into side of a hill, constructed of bamboo poles. Estimated 4 or 5 persons spent last night in area. Area checked with negative contact. Bunkers destroyed.

At 151900H coordinates (972448) Company Kilo is in assigned position.

At 152055H coordinates (974566). At time and coordinates states a Marine from Company Mike manning a listening post had a accidental discharge, wounding himself in the left leg.

16 February 1967. At 160800H coordinates (972448) Company Kilo reports negative contact with the enemy. Departing Patrol Base at above time and coordinates for Company Kilo CP.

At 160950 coordinates (974566) Company Mike Med Evac a non-battle casualty. Marine had a accidental discharge wounding himself in the left leg at 152055H. Med Evac was by surface transportation.



16 February 1967. At 161205H coordinates (965567) Company Mike Patrol spotted three enemy moving NW. Distance too great to observe uniform and equipment. Artillery fire mission called with excellent target coverage; results unknown.

At 161350H coordinates (012455) Company Kilo arrived at their CP.

At 161525H coordinates (980555) Rock Pile OP observed three enemy wearing dark clothing moving NE. 81mm mortar fire mission called; 40mm delivered direct fire at target. Excellent target coverage. Patrol from 3d Bn CP searched area at 161700H with negative results.

At 161930H coordinates (964573) Company Mike Patrol observed lights on ridge line. Artillery mission called with excellent target coverage, lights went out.

17 February 1967. At 171342H 3d Battalion, 3d Marines (-) (Rein) commenced helilift for Search and Destroy Operation.

At 171352H leading elements of Company India landing at their assigned HLZ. Landing unopposed.

At 171440H The last units of the Command Group and Company India helilifted for assigned HLZ.

At 171600H leading elements of Company Lima helilifted for their assigned HLZ.

At 171615H Hotal Company, 2nd Battalion, 3d Marines came under 3d Battalion, 3d Marines OPCON.

At 171700H coordinates (900504) Co India point observed 3 unnamed VC at approximately 30 meters from Co India position. Fire was brought to bear. VC ran in a westerly direction through heavy jungle. VC were carrying packs. Point fire team searched area with negative results.

At 171735H coordinates (921492) Co Lima found a large base camp. It consists of approximately 30 sleeping bunkers. None were built for fighting. Old batteries and hammocks found in area. It is believed area has not been used in approximately 2 weeks.

At 171815H coordinates (919494) Co Lima located base camp approximately same size as last base camp (30 bunkers). Has not been in use in last 30 days. 1 AK-47 and 1 Chinese carbine w/folding bayonet, E tools and many blood stained utilities found in area.

At 172100H coordinates (903507) Command Group and Company India established Command Post's.

18 February 1967. At 180750H coordinates (895503) Co India discovered three burial mounds surrounded by freshly cut wood fence. The graves contained 3 bodies (male) wrapped in plastic. Bodies were clothed in black. They were buried 13Jan67 according to head markers. Died of wounds.

Late Entry: At 171900H coordinates (899504) Company India located a small complex of bamboo and palm boughs. It is believed this is the same complex previously reported by Recon. Complex consisted of 2-3 man huts. Complex was searched and destroyed.

ENCLOSURE (3)

At 181130H coordinates (909498) Co Lima located base camp with 10 fighting bunkers. Foot prints in mud indicate area might have been used in the past few days. Bunkers destroyed.

At 181235H coordinates (903947) Co Lima located base camp with 30 fighting and living bunkers. It appeared to have been occupied approximately 12 hours ago. Bunkers destroyed.

At 181245H coordinates (913497) while Co Lima was destroying base camp. One VC was captured. He was not carrying any weapons. His ruck sack was full of chow. He was dressed in black clothing.

At 181425H coordinates (965569) Co Mike patrol found cave complex containing ammo brass and aiming stake for mortar.

At 181500H coordinates (903497) Co Lima patrol was moving along trail when they encountered 1 man, woman and child. Man was captured (VCS) woman and child escaped. Patrol point was then fired on by NVA, Marine was wounded in neck. NVA was brought under fire and killed. Captured 1 Chinese sub-machine gun and 100 lbs of rice. Marine was Med Evac at 181500H.

At 181825H coordinates (914514) Co India patrol found an enemy rest camp with trenches, fighting holes and tables. Large enough to accomodate 30 to 40 men. Camp is approximately 2 weeks old. Search of area made with negative results.

At 181835H coordinates (903497) A complex of three base camps found within 100 meters of each other. The following items have been found. 2 new NVA uniforms plus assorted pieces of uniforms, a pack with foreign made map enclosed in plastic, note book with writing. Search also revealed a fresh dead body dressed in a gray NVA uniform. Inspection revealed he was killed with S/A.

19 February 1967. At 190900H coordinates (916514) Co India patrol found  $\frac{1}{2}$  pound of cooked rice, 1 carbine pouch. Rice estimated to be one day old.

At 190800H coordinates (906498) Co Lima patrol while searching base camp found the following items. 2 82mm mortar tubs, 1 box of demolitions and 6 Chinese anti-tank rounds.

At 190950H coordinates (906498) At above time and coordinates Co Lima received 3 KIA's and 10 WIA's from friendly artillery.

At 191215H coordinates (905496) Co Lima during its search of base camp discovered, 2 complete 82mm mortars, 4 boxes of AT rounds (6 per box). 23 cases Chicom grenades (10 per case). 3 cases of Chicom grenades (10 per case). 3 cases of 82mm mortar ammo (6 per case). 5 cases of explosives (100 2 $\frac{1}{2}$  blocks per case). 12 packs with assorted food, letters and personal gear.

At 191500H coordinates (917514) Co India patrol found a series of fighting holes numbering from 200 to 300. Fighting holes approximately 1 month old. Search made of area with negative results.

At 191515H coordinates (907499) At above time and coordinates Co Lima while searching base camp found the following. 25 Chicom grenades, 1 claymore mine, 3 Marines utilities. Area still being search.

ENCLOSURE (9)

At 191615H coordinates (914517) Co India patrol has rejoined Co India and Command Group.

At 191615H coordinates (917508) Co India patrol found a small camp with one heavily fortified fighting hole and a 5 foot long tunnel. Area had not been occupied for at least 3 weeks. Tunnel destroyed and area search with negative results.

At 191930H Company Lima completed search of base camp and discovered the following. 1 Chinese carbine, 150 pounds of rice in bags. 1000 pounds rice in bin in tunnel complex. Tunnel complex with rice destroyed.

20 February 1967. At 201115H coordinates (907499) Co Lima found 3 boxes of explosives totalling 78 pounds. Explosives blown in place. Co Lima continues to destroy complex.

At 201235H coordinates (907499) Co Lima Med Evac was completed, 1 VCS captured on 18Feb67 also flew out with Med Evac helicopters.

At 201630H coordinates (915505) Co Lima rejoined Co India and Command Group.

At 202010H coordinates (979568) a bomb estimated at 250 pounds was dropped on Co Mike position. All personnel in area ~~escaped~~ injury.

21 February 1967. At 210730H coordinates (915505) the leading elements have started moving to HLZ located (918522) to returned to 3d Battalion, 3d Marines.

At 211215H coordinates (918522) heli lift started.

At 211505H Company India, Lima and Command Group returned to 3d Battalion, 3d Marines CP.

22 February 1967. At 221105H coordinates (965507) Company India patrol was fired on by one enemy. Patrol returned fire and immediately started a sweep of the area, enemy was seen fleeing in a easterly direction.

At 221120H coordinates (974566) Company Mike Med Evac one Marine with appendicitis.

23 February 1967. At 231500H Echo Company, 2nd Battalion, 3d Marines came under OPCON 3d Battalion, 3d Marines.

24 February 1967. No significant event.

25 February 1967. At 250915H coordinates (965579) Company Mike patrol at above time and coordinates received three small arms rounds. 81mm mortar mission called with excellent target coverage, results unknown.

At 251445H coordinates (968613) Company Mike OP observed five enemy moving north towards Hill 484. Distance too great to observe clothing and weapons. Artillery mission called with excellent target coverage, results, unknown.

26 February 1967. No significant events.

ENCLOSURE (3)



SECRET

27 February 1967 At 270400H, 3d Battalion, 3d Marines commenced search and destroy operation.

At 270755H coordinates (952563) Company India found ten small fighting holes and one 3X5 foot bunker covered with bamboo. Bunker destroyed.

At 271500H coordinates (963575) Company Lima located cave with two entrances approximately 3 feet wide, 6 feet high and 30 feet long. The following items were discovered: 29-Chicom grenades, 13-82mm mortar rounds, 14-82mm mortar fuzes, 1-foot locker with eating gear, 1-bloody bandage, 6-empty fuze cans, 1-grenade box and 1-bamboo basket.

At 271500H coordinates (947558). Company India had one Marine fall hurting his knee. Marine is unable to walk. Marine will be Med Evac at first opportunity.

At 271705H coordinates (953572). Company India found one hut 4X4 feet. Hut was destroyed.

At 271805H coordinates (955577). Company Lima found twelve fighting holes and a 12X12 foot hut, 1000 rounds of linked 7.62 ammunition and twelve US helmets (unservicable). All items destroyed.

28 February 1967. At 281040H coordinates (948583). A Marine from Company Lima was working on foxhole when blast occurred injuring him. Search of area revealed a second grenade in same vicinity with a trip wire attached to it, grenade was destroyed in place. Marine was Med Evac at 281220H.

At 281335H coordinates (947583) a mine of undetermined nature exploded slightly wounded one Marine. Med Evac not requested.

At 281400H coordinates (965587). Company Lima located a cave 4X4X15 feet. The following ordnance and equipment was found in cave: 9-82mm mortar rounds, 35-82mm mortar fuzes, 2-boxes of 7.62 ammunition (2000 rounds), 22-Chicom grenades, 4-R.P.G. rockets, 3-green flare cylinders, 2-magazines for sub-machine gun, 4000 rounds AK-47 ammunition, 1-banana clip, bowls and dishes. It was estimated that the cave had not been used for quite some time. All ordnance and equipment destroyed except 82mm mortar fuzes.

At 281405H 3d Battalion, 3d Marines concluded operation Prairie II Frag Order 6-67 and returned to 3d Battalion, 3d Marines CP.

At 281835H Company Lima commenced move by truck to Cam Lo. At 281930H Company Lima arrived at Cam Lo and disembarked.

At 282040H Command Group Alpha and Company India departed 3d Battalion, 3d Marines CP.

At 282040H coordinates (YD 140612). Company Lima established a defensive perimeter. Will hold position until Command Group Alpha and Company India arrive at this location.

At 282158H Command Group Alpha and Company India arrived at Cam Lo. Commenced foot march to link up with Company Lima at (YD 104612).

At 282345H Command Group Alpha and Company India linked up with Company Lima, set in for night.

ENCLOSURE (3)

3d Bn, 3d Marines  
Dong Ha, RVN  
040800H Feb 1967

Operation Plan 1-67

Ref: (a) Map: Vietnam, 1:50,000, AMS Series L7014, Sheet 6342 I

1. Situation.

- a. Enemy Forces. See current INTSUMS.
- b. Friendly Forces. No change.
- c. Attachments. No change.

2. Mission. 3d Battalion, 3d Marines reinforces defensive positions located on Razor Back Ridge with direct support artillery and 40mm fires.

3. Execution.

a. Concept of Operation. In the event an attack is launched against the defensive complex on Razor Back Ridge, coordinates (976564), the following actions will be taken:

(1) One platoon of SP 105 artillery will displace, on order, to vicinity of coordinates (985538) to engage targets of opportunity and such other missions as may be directed by Battalion FSCC. Initial fire will be directed in accordance with Annex A to this order.

(2) One rifle squad will be assigned to the displacing artillery platoon as security.

(3) One section twin 40mm guns will displace on order, to vicinity of coordinates (970540) and provide sweeping zone fire in areas directed by Battalion FSCC.

b. Btry "B" 1st Bn 40th Artillery USA. Be prepared to execute mission stated in para 3a (1) above, on order.

c. 2nd Plt, Btry "C", 1st Bn, 44th Artillery USA. Be prepared to execute mission stated in para 3a (3) above.

d. Company India. Be prepared to provide security element as set forth in para 3a (2) above, on order.

e. Coordinating Instructions.

- (1) H Hour and D-Day on order.

CONFIDENTIAL

(3) Displacing platoon, Btry "B", notify Battalion FSOC on artillery conduct of fire net when in position and laid.

(4) Displacing section of Btry "C" notify Battalion FSOC when in firing position. Do not fire until area is assigned by FSOC and target area is designated as shown on Annex A.

(5) This plan is effective for planning on receipt; execution on order.

4. Administration and Logistics. Basic allowance of V; Classes I thru IV as required.

5. Command and Communication-Electronics.

- a. No change.
- b. Communication-Electronics - Btry "C" enter Payable TAC Net M 543.
- c. Defensive positions on Razor Back Ridge will mark lines with smoke on order

BY COMMAND OF LIEUTENANT COLONEL DELONG

*S. Wawrzyniak*  
 S. WAWRZYNIAK  
 Major, U. S. Marine Corps  
 Executive Officer

List of Annexes:

A. Fire Support

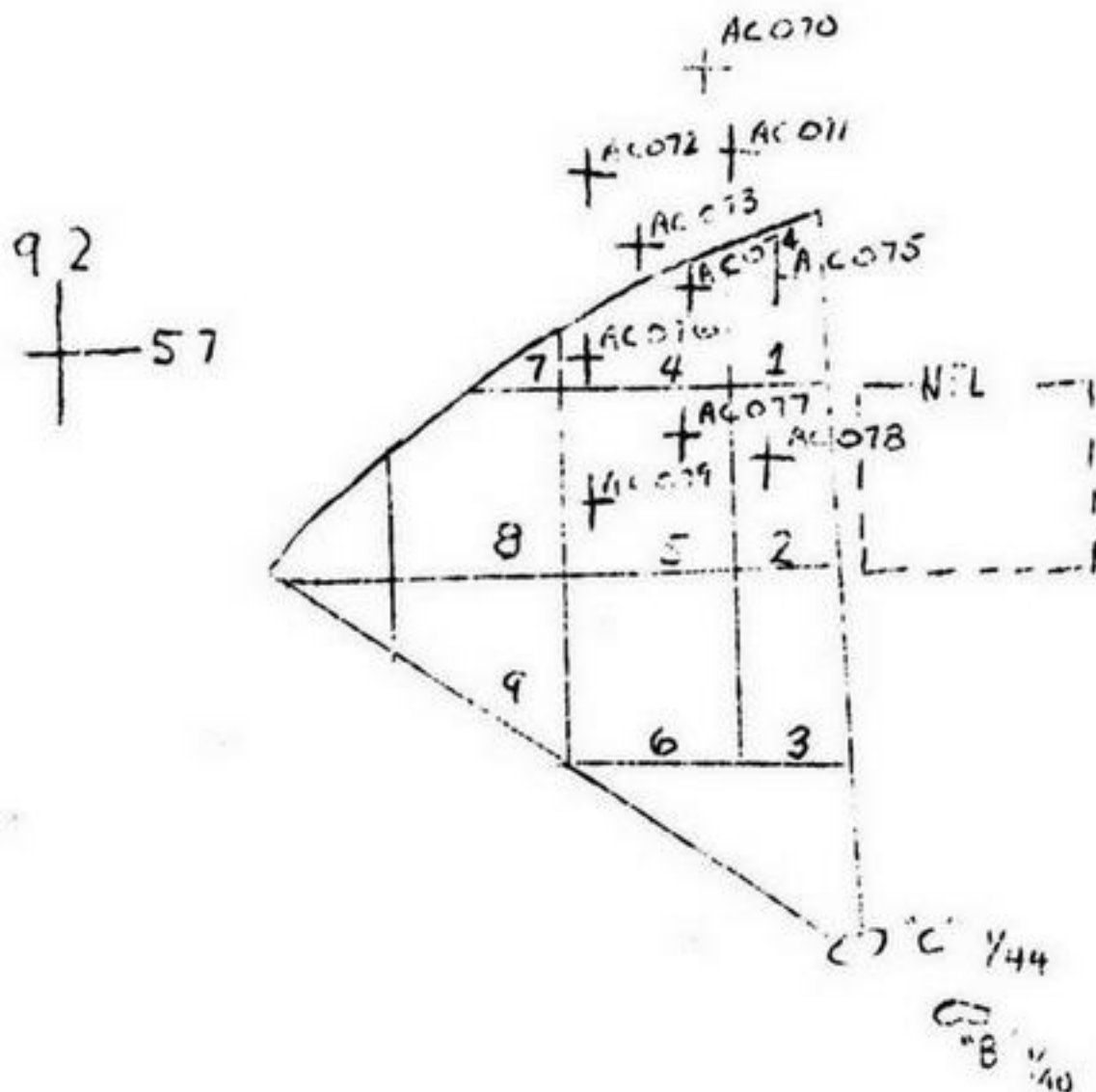
DISTRIBUTION: Annex A (Distribution) to Operation Plan 1-67

Bd en, 3d Marines  
Dong Ha, RVN  
040800H Feb 1967

Annex A to Operation Plan 1-67

Ref: (a) Map: Vietnam, 1:50,000, AMS Series L7014, Sheet 6342 I

Time Zone: H



BY COMMAND OF LIEUTENANT COLONEL DELONG

*S. W. Nawrzyniak*  
S. NAWRZYNIAK  
Major, U. S. Marine Corps  
Executive Officer

DISTRIBUTION: Annex A (Distribution) to Operation Plan 1-67

1st Bn, 3d Marines  
Dong Ha, RVN

Operation Order 1-67

Ref: (a) 3d Marines Operation PRAIRIE Frag Order 4-67  
(b) Map: Cam Lo, 1:50,000, Sheet 6342 I  
(c) Map: Thon Doc Kenh, 1:50,000, Sheet 6342 II  
(d) Bn SOP for Operational Logistics

Time Zone: H

1. Situation.

a. Enemy Forces. See current INTSUMS.

b. Friendly Forces.

- (1) 2nd Bn, 94th Artillery USA in general support.
- (2) Btry "M", 4th Bn, 12th Marines in general support.
- (3) Btry "B", 1st Bn, 40th Artillery, USA in direct support.
- (4) 1st MAW provides initial helilift; CAS, resupply and such other support as may be required.
- (5) AO and Gunships will be on station during all troop lifts. AO on station during daylight hours.
- (6) Prep fires: Prep fires will be conducted in LZ Eagle, Osprey and Condor as follows:

(a) Eagle and Osprey; L-30 mins to L-15 mins. Artillery neutralization fires. L-15 mins to L-10 mins CAS. L-8 mins to L-5 mins. Artillery neutralization fires.

(b) Condor; L+90 mins to L+100 mins. Artillery neutralization fires. L+105 mins to L+110 mins CAS. L+112 mins to L+115 mins Artillery neutralization fires.

c. Attachments.

- (1) One Platoon, 123 RF Company attached Co "K" effective D-Day.
- (2) HST Team attached Co "I" effective 1200 D-Day.
- (3) FAC Team attached Co "I" effective 1200 D-Day.



- (4) Engineer Squad attached Co "I" effective 1200 D-Day.
  - (5) HST Team attached Co "L" effective 1200 D-Day.
  - (6) Engineer Squad attached Co "L" effective 1200 D-Day.
  - (7) Co "H" 2nd Bn, 3d Marines passes OPCON 3d Bn, 3d Marines for Phase II Operations.
2. Mission. 3d Bn, 3d Marines conducts a search and destroy operation in the area bounded by GS (8951), (9351), (9443) and (9844).

3. Execution.

a. Concept of Operation.

- (1) The operation will be conducted in two phases as follows:

(a) Phase I

1. During the early morning hours, under the cover of darkness, at H-Hour, one Rifle Company (-) (Rein) with a RF Platoon will depart Ca Lu; move over land and establish a blocking force along the trail from vicinity of coordinates (967448) to (969453); primary mission to block trail and draw running north/north west in GS (9645).

2. One Rifle Company and Command Group will be helilifted from Bn CP coordinates (983546), at L-Hour to LZ Eagle; proceed west intersecting trail leading south; proceed along same until effective link up with blocking force.

3. Dependent on nature of enemy activities it is anticipated D+1 and D+2 will be spent conducting a thorough search of the area prescribed and a 1000 meter radius around the blocking force.

4. In the event of heavy enemy contact in draw GS (9645), another Rifle Company (Rein) will be helilifted from Battalion CP coordinates (983546), to LZ Sparrow with mission of establishing blocking positions in north and east portions of draw.

(b) Phase II will commence at L-15 on D+3.

1. Blocking force will return to Ca Lu.

2. One Rifle Company (Rein) and Command Group will be helilifted from LZ Hawk to LZ Osprey at L-Hour; conduct search and destroy operation of reported VC complexes at coordinates (910500) and (903501); prepared, on order to establish blocking force across draw vicinity of coordinates ((914503).

3. One Rifle Company will be helilifted at L+2 hours from Battalion CP coordinates (983546), to LZ Condor; moves south; intersects major trail vicinity of coordinates (922492); proceeds north/northwest along trail; conducts search and destroy operation along trail and western slope of draw; effect link up with blocking force.

4. D+4 and D+5. Phase II forces conduct search and destroy operations, as may be directed in area bounded by GS (9051) and (9249).

5. Anticipate helilifted for return to Battalion CP on afternoon of D+5 or morning of D+6 from LZ to be designated.

6. Co "K" execute that portion of mission stated in para 3a (1) (a) 1. and 3a (2) (a) 1. above.

7. Co "I" execute that portion of mission stated in para 3a (1) (a) 2. and 3a (2) (b) 2. above.

8. Co "L" be prepared to assume responsibility for designated portions of the Battalion CP defensive perimeter; be prepared to execute that portion of the mission stated in para 3a (1) (b) 3. above.

9. H&S Co be prepared to assume responsibility for designated portions of the Battalion CP defensive perimeter; activate Command Group Alpha, on order.

10. Command Group Alpha move with Co "I" .

11. 123 RF Company attach one platoon to Co "K" for operation.

12. Co "M" continue present mission.

13. Co "H" 2ndBn, 3d Marines be prepared to assume responsibility for defense of Battalion CP area, on order

b. Coordinating Instructions.

(1) Phase I.

(a) D-Day 11 Feb 1967.

(b) H-Hour for Co "K" 122300H.

(c) L-Hour 120730H.

(d) LZ.

1. Eagle (941476).
2. Sparrow (966466)
3. Hawks (975458)

(e) Reference point is located at coordinates (9646)  
Code name: CARS.

(f) No fire line for Phase I is line running from coordinates (960447) to (970460). Fires in support of Co "K" are restricted to south and east of no fire line. Fires in support of Co "I" are restricted to north of no fire line.

## (2) Phase II.

(a) L-Hour 0730H D+3.

(b) LZ's

1. Osprey (900495).
2. Condor (924495).

(c) Reference point is located at coordinates (9249); code name GIRLS.

(d) No fire line is line running from coordinates (910510) to (910490). Fires in support of Co "L" are restricted to east of the no fire line. Fires in support of Co "I" are restricted to west on no fire line.

(3) Coordinating Instructions Both Phases.

(a) Rules of Engagement apply.

(b) Supporting Artillery and Air is to be utilized to the maximum in the event of enemy contact.

(c) Units will be prepared to mark front lines with smoke and/or pannels as required.

c. Reports.

- (1) Submit SitReps every hour on the half hour.
- (2) Submit Spot Reports when ever applicable.

4. Administration and Logistics.

- a. Basic Allowances, all classes of supply, as set forth in ref (c).
- b. 6 MCI's per individual; consumption rate, one meal per day no resupply of Class I is anticipated.
- c. No resupply except emergency Class IV will be requested.

5. Command and Communications/Electronics.a. Communications/Electronics.

(1) In accordance with reference (c); each Company and the Command Group carry one RC 292.

(2) 3d Marines establish Regt TAC Relay Station on Rock Pile on D-Day.

- b. Command Posts. Command Group initially moves in trace of Co "I".

BY COMMAND OF LIEUTENANT COLONEL DELONG

*S. Wawrzyniak*  
 S. WAWRZYNIAK  
 Major, U. S. Marine Corps  
 Executive Officer

DISTRIBUTION: Special

3d Bn, 3d Marines  
Dong Ha, RVN  
031600H Feb 1967

Frag Order 4-67

Ref: (a) Map: Vietnam, 1:50,000, IFS Series L7014, Sheet 6342 I  
(b) Battalion SOP for Operational Logistics

Time Zone: H

1. Situation.

a. Enemy Forces. See current INTSUMS.

b. Friendly Forces.

- (1) Btry "M" 4th Battalion, 12th Marines in general support.
- (2) Btry "C" 1st Battalion, 12th Marines in general support.
- (3) Btry "B" 1st Battalion, 40th Artillery in direct support.

c. Attachments. FAC team attached Company India effective 1700H on D-1.

2. Mission. 3d Battalion, 3d Marines conducts a Recon in Force operation in area bounded by GS (9752), (0152), (9749) and (0149).

3. Execution.

a. Concept of Operation. One rifle platoon (Rein) departs present position at H-Hour; moves to hill 248 vicinity of coordinates (998521); establishes Platoon Patrol Base; conducts Recon in Force of all avenues of approach leading there-to; on D+1 moves to vicinity of coordinates (015510); establishes Platoon Patrol Base; conducts Recon in Force of all avenues of approach leading there-to; on D+2 return to Company India CP.

b. Company India.

- (1) Executes mission as set forth in para 3a above.

c. Company Mike.

- (1) Be prepared to assume responsibility for such areas of the Battalion CP defensive perimeter as may be assigned.

d. Coordinating Instructions.

- (1) H-Hour 040600H D-Day 4 February 1967.
- (2) Map reference point for entire operation is located at (9951). Code name is "Girls".
- (3) Submit SitRep every hour on the half hour and Spot Reports as situations occur.
- (4) Report all areas along routes that may serve as a HLZ to include: Size of area and vegetation.
- (5) Rules of Engagement apply.

4. Administration and Logistics. Basic allowances of all classes of supply in accordance with reference (b).

5. Command and Communication-Electronics.

- a. No change.
- b. Communication-Electronics in accordance with reference (b).

BY COMMAND OF LIEUTENANT COLONEL DEIONG

*S. Wawrzyniak*  
S. WAWRZYNIAK  
Major, U. S. Marine Corps  
Executive Officer

DISTRIBUTION: Special



3d Bn, 3d Marines  
Dong Ha, RVN  
031600H Feb 1967

Frag Order 5-67

Ref: (a) Vietnam, 1:50,000 AMS Series I7014 I, Sheet 6342 II (Thon Doc Kninh)  
(b) Battalion SOP for Operation Logistics

Time Zone: H

1. Situation.

a. Enemy Forces. See current INTSUMS.

b. Friendly Forces.

- (1) Btry "B" 1st Battalion, 40th Artillery in direct support.
- (2) Btry "M" 4th Battalion, 12th Marines in general support.
- (3) 175mm Battalion, 94th Artillery USA in general support.
- (4) 1st MAW will provide CAS as requested.
- (5) AO will be provided on request.

c. Attachments. No change.

2. Mission. 3d Battalion, 3d Marines conduct a Recon in Force in area bounded by coordinates (9547), (9642), (0045) and (0047).

3. Execution.

a. Concept of Operation. One Rifle Platoon (Rein), depart present position at H-Hour on D-Day, moves to vicinity of coordinates (961461), establishes Platoon Patrol Base, conducts Recon in Force of all avenues of approach leading there-to, moves to vicinity of coordinates (969450) on D+1. Establish Platoon Patrol Base; conducts Recon in Force of all avenues of approach leading there-to, returns to Company CP via Route 9.

b. Company Kilo.

- (1) Execute mission as set forth in para 3a above.

c. Company India.

- (1) Be prepared to move in support of Company Kilo if so ordered.

d. Company Mike.

(1) Be prepared to assume responsibility for such areas in the Battalion CP defensive perimeter as may be assigned.

e. H&S Company.

(1) Be prepared to activate Command Group Alpha on order. Assume assigned portions of the Battalion CP defensive perimeter on order.

f. Coordinating Instruction.

(1) H-Hour 040600H D-Day 4 February 1967.

(2) Map reference point for entire operation is located at (9945). Code name Pro Football Teams.

(3) Submit SitRep every hour on the half hour and Spot Report as situations occur.

(4) Report all areas along route that may serve as a HLZ to include:

(a) Size of zone.

(b) Vegetation.

4. Administration and Logistics. Basic allowance of all classes of supply in accordance with reference (b).

5. Command and Communication-Electronics.

a. No change.

b. Communication-Electronics in accordance with reference (b).

BY COMMAND OF LIEUTENANT COLONEL DELONG

*S. Wawrzyniak*  
S. WAWRZYNIAK  
Major, U. S. Marine Corps  
Executive Officer

DISTRIBUTION: Special



3d Ba, 3d Marines  
Dong Ha, RVN  
052200H Feb 1967

Frag Order 6-67

Ref: (a) Map: Vietnam, 1:50,000 AMS Series L7014, Sheet 6342 I  
(b) Bn SOP for Operation Logistics

Time Zone: H

1. Situation.

a. Enemy Forces. See current INTSUMS

b. Friendly Forces.

- (1) Btry "M" 4th Bn, 12th Marines in general support.
- (2) Btry "C" 1st Bn, 12th Marines in general support.
- (3) Btry "B" 1st Bn, 40th Artillery USA in direct support.

c. Attachments.

- (1) FAC team attached Company "M", effective 1700 on D-1.

2. Mission. 3d Battalion, 3d Marines conducts a Recon in Force operation in area bounded by Grid Squares (9752), (9749), (9449) and (9452).

3. Execution.

a. Concept of Operation.

(1) One Rifle Platoon (+), departs present position at H-Hour; moves to Grid Square (9649). Establish Platoon Patrol Base (PPB); conducts Recon in Force of all avenues of approach leading thereto: On D+1 move to Grid square 9449; establish PPB; conduct Recon in Force of all avenues of approach leading thereto: On D+2 return to Company Mike CP.

b. Company Mike.

- (1) Execute mission as set forth in para 3a above.

c. Company India.

(1) Be prepared to assume responsibility for such areas in the Battalion CP defensive perimeter as may be assigned.

d. Coordinating Instructions.

- (1) H-Hour 060600H D-Day 6 February 1967.
- (2) Map reference point for entire operation is located at (9650). Code name is "CARS".
- (3) Rules of Engagement apply.

e. Reports.

- (1) SitRep will be submitted every hour on the half hour.
- (2) Spot Reports will be submitted whenever applicable.
- (3) Report all areas along routes that may serve as a HIZ to include: Size of area and vegetation.

4. Administration and Logistics.a. Supply.

- (1) Basic allowances of all classes of supply in accordance with reference (b).

5. Command and Communication-Electronics.a. Command. No change.b. Communication-Electronics. In accordance with reference (b).

BY COMMAND OF LIEUTENANT COLONEL DELONG

*S. W. Wierzyński*  
 S. WIERZYŃIAK  
 Major, U. S. Marine Corps  
 Executive Officer

DISTRIBUTION: Special

3d Bn, 3d Marines  
Dong Ha, RVN  
071410H Feb 1967

Frag Order 7-67

Ref: (a) Map: Vietnam, 1:50,000, AMS Series L7014, Sheet 6342 I  
(b) Battalion SOP for Operational Logistics

Time Zone: H

1. Situation. No change.
2. Mission. Coordinate a relief of lines between Company "M" and "L".
3. Execution.

a. Concept of Operation. This relief of lines will be accomplished in five phases, during the hours of darkness as follows:

(1) Phase-One. Commencing at 080800H relief of security units on the Rock Pile OP will be executed. Company Mike provide one T/O rifle squad for helilift to OP.

(2) Phase-Two. At 090730H one rifle platoon (+), plus one NCO per squad from remainder of Co "M" will be moved to Co "L" position; from there, under command of Co "L" effect relief of defensive positions vicinity of Razor Back Ridge. Platoon relieved from Razor Back Ridge move to Bn CP and act as guides for Co "L".

(3) Phase-Three. Co "M" (-) (Rein) departs Bn CP defensive perimeter at 092000H moves via route 9 to vicinity coord (981564); dispers; and establishes control point on road south of Co "L" landing zone. Relief will be effected on a platoon for platoon basis with Co "L" units, subsequent to relief, staging in vicinity of coords (985563).

(4) Phase-four. Co "L" (-) (Rein), upon completion of relief, departs staging area; moves via route 9 to Bn CP; stage along route 9 inside Bn CP defensive perimeter; guides from Co "L" meet and guide units into position.

(5) Phase-five. Organizational equipment will be moved by vehicle, commencing 100730H.

b. Company Mike.

(1) Execute portions of mission stated in para 3a (1), (2), (3) and (5) above.

CONFIDENTIALc. Company Lima.

(1) Execute portions of mission stated in para 3a (3), (4) and (5) above.

d. H&S Company.

(1) Be prepared to assume responsibility for designated portions of Bn CP defensive perimeter on order at 091700H.

e. Co India.

(1) Be prepared to assume responsibility for designated portions of Bn CP defensive perimeter, on order, at 091700H

f. Coordinating Instructions.

(1) Bn S-3 prepare and brief Commanders of Co "L" and Co "M" on area regarding patrol routes, ambush sites, used prior to relief of lines.

(2) Company Commanders prepare and turn over to their relief the following information.

(a) Defensive fire plan with separate overlays for each platoon.

(b) Fire direction charts for individual fighting holes and crew served weapons.

(c) Communication facilities to include internal and external.

(3) Co "M" establish a control point for the movement of platoons to and from Co "L" defensive perimeter.

(4) Noise will be kept to an absolute minimum.

(5) All organizational equipment for movement will be staged on 9Feb67 for movement at first light on 10Feb67. Proper security will remain with equipment.

4. Administration and Logistics.a. Supply.

(1) Bn S-4 brief Commanding Officer Co "M" regarding resupply for all positions within his new AO.

(2) Commanding Officer Co "L" conduct inventory, by class, of all supplies left on position for Co "M".

(3) All supplies, except BA of Class V, as set forth in ref (a) will be left on position.

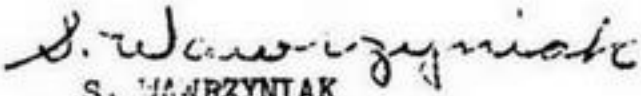
(4) Common items such as tentage may be exchanged for like item on approval of both Commanding Officers.

5. Command and Communication-Electronics.

a. Communication-Electronics. In accordance with ref (b).

b. Command Post. 3dBn, 3d Marines no change.

BY COMMAND OF LIEUTENANT COLONEL DELONG

  
S. WAWRZYNIAK  
Major, U. S. Marine Corps  
Executive Officer

DISTRIBUTION: Special



S-4 CHRONOLOG

1. Journal - See Appendix A and B
2. Estimates - Not applicable
3. Staff Studies - Not applicable
4. Supply Requirements

<u>NOMENCLATURE</u>	<u>FSN</u>	<u>QTY</u>
Generator Set PU-482	6115-721-4525	1
Generator Set PU-348A/G	6115-682-3414	1
Mattress Pneumatic	8465-254-8887	376
Refrigerator Unit ME-10	4110-289-7965	2
Refrigerator 8 Cu.	4110-287-5850	2
Lub & Serv Unit	4930-030-2106	1

5. Procurement Problems - None
6. Problems and Solutions
  - a. Procurement - None
  - b. Evacuation and Hospitalization of POW's - N/A
  - c. Transportation - This Battalion is not provided with enough trucks 2 1/2 ton to support the resupply of our Battalion CP forward and housekeeping runs that are required in the rear CP.
  - d. Maintenance - N/A
  - e. Construction and Fortification - N/A
  - f. Sanitation - N/A
7. Deadline Equipment by Type

a. Motor Transport	<u>NOMENCLATURE</u>	<u>QTY</u>
	M422A1	1
	M274A1	3
b. Ordnance	81MM Mortar	2
	M60 Machine Gun	1
	106MM M40A1C.	2

•. COMM/ELEOT

NOMENCLATURE

QTY

8. Employment of Indigenous Personnel - N/A

9. Embarkation - Satisfactory

2-4 (FWD) JOURNAL

TIME		SERIAL	DATE TIME	INCIDENTS. MESSAGE. ORDERS
IN	OUT	NO.	GROUP	
				1 Feb 1967
1200		#1		Rec. 1 Trk for ReSup of CP and PL
1400		#2		ReSup PL by Trk
1700		#3		Cont'd removing excess Ammo
1800		#4	011800H	Rec. ReSup Req. Fm PK
				2 Feb 1967
1100		#5		Rec. 2 Trks for ReSup of CP and PL
1300		#6		ReSup PL by Trk
1600		#7	021600H	Rec. ReSup Req. Fm PK
1700		#8		Cont'd removing excess Ammo
				3 Feb 1967
1115		#9		Rec. 3 Trks for ReSup of CP and PL
1200		#10		Sent 2 Trks to PZ for Housekeeping
1300		#11		ReSup PL by Trk
1300		#12		Began ReSup of Class 1 to PK
1730		#13		Cont'd ReSup PK by Mite
1730		#14		Cont'd removing excess Ammo
1800		#15		Plans for PK ReSup
				4 Feb 1967
1100		#16		Rec 4 Trks for ReSup of CP and PK
1200		#17		Sent 3 Trks to PK and 1 Trk to Rear
1300		#18		ReSup PL with Class 1
1500		#19		Trk returned Fm Rear with Class 5
1530		#20		Completed ReSup of PK
1630		#21		Remaining 1 Trk hauled Grass Cutters
				5 Feb 1967
1000		#22		Rec 2 Trks for ReSup CP
1100		#23		Sent Trks to Rear
1500		#24		Trk returned Fm Rear with Sup
1500		#25		ReSup PK
1600		#26		ReSup PL with Class 1
				6 Feb 1967
0945		#27		Rec 2 Trks for PK ReSup
1240		#28		Rec 2 Trks for CP and PL ReSup
1300		#29		Trks returned Fm PK and Sent to Rear
1330		#30		ReSup PL by Trk
1530		#31		Trk returned Fm PL
1800		#32	061800H	Rec ReSup Req Fm PL

S-4 (FWD) JOURNAL

TIME		SERIAL NO.	DATE TIME GROUP	INCIDENTS, MESSAGE, ORDERS
IN	OUT			
7 Feb 1967				
1100		#33		Rec 2 Trks for ReSup of CP and PL
1300		#34		ReSup PL
1500		#35		Completed ReSup of CP and PL
1630		#36		Trk loaded Grass Cutters for Rear
8 Feb 1967				
1100		#37		Rec 2 Trks for ReSup of CP and PL
1200		#38		Sent 1 Trk to Rear for more Sup
1500		#39		Notified Trk in Rear would not return
1600		#40	081600H	Rec ReSup Req Fm PK
1700		#41		Sent Trks to Rear
1300		#42		Contact Team arrived at CP
9 Feb 1967				
1000		#43		Rec 2 Trks for PC ReSup
1100		#44		ReSup PL and moved troops to CP
1400		#45		ReSup PK
1600		#46	091600H	Rec ReSup Req Fm PL
1630		#47		Sent Trks to Rear
1700		#48		Contact Team still operating
10 Feb 1967				
1100		#49		Rec 3 Trks for ReSup of CP
1200		#50		ReSup PM and completed moving gear
1300		#51		Last of PL gear moved to CP
1500		#52		Completed ReSup of CP and PL
1600		#53	101600H	Rec Sup Req of PK
1700		#54		Contact Team still operating
11 Feb 1967				
0930		#55		Rec 4 Trks for ReSup of CP and PK
1115		#56		Completed ReSup of PK
1500		#57		Completed ReSup of PM
1600		#58	111600H	Rec ReSup Req Fm PM
1700		#59		Contact Team still in area
12 Feb 1967				
1300		#60		Rec 1 Trk for ReSup
1400		#61		ReSup M2 by Halo
1000		#62		Contact Team sent to PK
1600		#63		Sent Trk to Rear
13 Feb 1967				
1100		#64		Rec 1 Trk for ReSup
1200		#65		ReSup PM
1600		#66		Sent Trk to Rear
1700		#67	131700H	Rec ReSup Req Fm PM

8-4 (FWD) JOURNAL

TIME		SERIAL NO.	DATE TIME GROUP	INCIDENTS, MESSAGE, ORDERS
IN	OUT			
14 Feb 1967				
1100		#68		Rec 1 Trk for ReSup
1300		#69		ReSup PM
1400		#70		Disp. 3 Mites to PK
1600		#71		Completed PM ReSup Req
1600		#72		Sent Trk to Rear
1700		#73	141700H	Rec ReSup Req Fm PM
1700		#74		Contact Team at PK
15 Feb 1967				
1100		#75		Rec 2 Trks for ReSup of CP
1230		#76		ReSup PM
1400		#77	151400H	Rec ReSup Req Fm PM
1500		#78		Disp. 2 Mites to PK for ReSup
1600		#79		Sent Trks to Rear
1700		#80		Contact Team at PK
16 Feb 1967				
1000		#81		Rec 2 Trks for ReSup of CP
1200		#82		ReSup PM
1400		#83	161400H	Rec ReSup Req Fm PM
1600		#84		Sent Trks to Rear
1700		#85		Contact Team at PK
17 Feb 1967				
0930		#86		Rec 3 Trks for ReSup of CP and PK
0930		#87		PK Trk to PK
1100		#88		Completed ReSup of PK
1200		#89	171200H	Rec PM ReSup Req
1430		#90		Completed ReSup of PM
1430		#91		Contact Team returned to CP
1600		#92		Sent Trks to Rear
18 Feb 1967				
1100		#93		Rec 2 Trks for ReSup of CP
1230		#94		ReSup PM
1300		#95	181300H	Rec ReSup Req Fm PM
1500		#96		Disp. 2 Mites to PK
1700		#97		Contact Team at CP
19 Feb 1967				
1100		#98		Rec 2 Trks for ReSup of CP
1230		#99		ReSup PM
1400		#100	191400H	Rec ReSup Req Fm PM
1600		#101		Sent Trks to Rear
1700		#102		Contact Team at CP



S-4 (700) JOURNAL

TIME		SERIAL	DATE TIME	INCIDENTS. MESSAGE. ORDER
IN	OUT	NO.	GROUP	
				20 Feb 1967
0930		#103		Rec 3 Trks for ReSup
1100		#104		Completed ReSup of PK
1300		#105		ReSup PM
1500		#106	201500H	Rec ReSup Req Fm PM
1700		#107		Sent Trks to Rear
				21 Feb 1967
1300		#108		Rec 2 Trks for ReSup of CP
1400		#109		ReSup PM
1600		#110		Sent Trks to Rear
1630		#111		Disp. 2 Mites to PK
1700		#112	211700H	Rec ReSup Req Fm PM
				22 Feb 1967
1530		#113		Rec 1 Trk for ReSup of CP
1700		#114		ReSup PM
1700		#115		Disp 2 Mites to PK
1800		#116		Mites returned to CP
				23 Feb 1967
1100		#117		Rec 2 Trks for ReSup of CP
1200		#118		ReSup PM
1300		#119		Sent Fuel to PK
1600		#120		Disp. Mites to Rear
1700		#121	231700H	Rec ReSup Req Fm PM and PK
				24 Feb 1967
1400		#122		Rec 2 Trks for ReSup of CP
1600		#123		ReSup PM
1700		#124		Disp. Mites to Rear
1800		#125	241800H	Rec ReSup Req Fm PM and PK
				25 Feb 1967
1000		#126		Rec 2 Trks for ReSup of CP
1200		#127		ReSup PM
1200		#128		ReSup PK
1500		#129		Sent Trks to Rear
1600		#130	251600H	Rec ReSup Req
				26 Feb 1967
1100		#131		Rec 2 Trks for ReSup of CP
1200		#132		ReSup PM
1400		#133		ReSup PK
1730		#134		Sent Trks to Rear
				27 Feb 1967
1200		#135		Rec 1 Trk for ReSup of CP
1300		#136		ReSup PM
1430		#137		ReSup PK
1700		#138		Sent Trk to Rear

S-4 (FWD) JOURNAL

TIME		SERIAL NO.	DATE TIME	INCIDENTS. MESSAGE. ORDER
IN	OUT		GROUP	
				28 Feb 1967
1200		#139		Rec 3 Trks for ReSup of CP
1245		#140		ReSup HK
1400		#141		Sent Trks to Rear

S-4 REAR JOURNAL

TIME		SERIAL	INCIDENTS, MESSAGES, ORDERS
IN	OUT	NO.	
			1 February 1967
0720		#1	Rec 1 Trk for Housekeeping and ReSup of FWD position
			2 February 1967
0735		#2	Rec 2 Trk for Housekeeping and ReSup of FWD position
			3 February 1967
0720		#3	Rec 3 Trks for Housekeeping and ReSup of FWD position
			4 February 1967
0715		#4	Rec 4 Trks for Housekeeping and ReSup of FWD position
			5 February 1967
0715		#5	Rec 2 Trks for Housekeeping and ReSup of FWD position
			6 February 1967
0720		#6	Rec 2 Trks for Housekeeping and ReSup of FWD position
			7 February 1967
0715		#7	Rec 4 Trks for Housekeeping and ReSup of FWD position
			8 February 1967
0735		#8	Rec 2 Trks for Housekeeping and ReSup of FWD position
			9 February 1967
0730		#9	Rec 2 Trks for Housekeeping and ReSup of FWD position
			10 February 1967
0730		#10	Rec 2 Trks for Housekeeping and ReSup of FWD position
			11 February 1967
0730		#11	Rec 3 Trks for Housekeeping and ReSup of FWD position
			12 February 1967
0800		#12	Rec 1 Trk for Housekeeping and ReSup of FWD position
			13 February 1967
0735		#13	Rec 1 Trk for Housekeeping and ReSup of FWD position
			14 February 1967
0730		#14	Rec 2 Trks for Housekeeping and ReSup of FWD position
			15 February 1967
0730		#15	Rec 2 Trks for Housekeeping and ReSup of FWD position

S-4 REAR JOURNAL

TIME		SERIAL NO.	INCIDENTS, MESSAGES, ORDERS
IN	OUT		
			16 February 1967
0730		#16	Rec 2 Trks for Housekeeping and ReSup of FWD position
			17 February 1967
0725		#17	Rec 3 Trks for Housekeeping and ReSup of FWD position
			18 February 1967
0730		#18	Rec 1 Trk for Housekeeping and ReSup of FWD position
			19 February 1967
0730		#19	Rec 3 Trks for Housekeeping and ReSup of FWD position
			20 February 1967
0730		#20	Rec 2 Trks for Housekeeping and ReSup of FWD position
			21 February 1967
0720		#21	Rec 2 Trks for Housekeeping and ReSup of FWD position
			22 February 1967
0730		#22	Rec 1 Trk for Housekeeping and ReSup of FWD position
			23 February 1967
0730		#23	Rec 2 Trks for Housekeeping and ReSup of FWD position
			24 February 1967
0800		#24	Rec 2 Trks for Housekeeping and ReSup of FWD position
			25 February 1967
0730		#25	Rec 2 Trks for Housekeeping and ReSup of FWD position
			26 February 1967
0720		#26	Rec 2 Trks for Housekeeping and ReSup of FWD position
			27 February 1967
0730		#27	Rec 1 Trk for Housekeeping and ReSup of FWD position
			28 February 1967
0730		#28	Rec 2 Trks for Housekeeping and ReSup of FWD position

AIR SUPPORT AND DEFENSIVE CHRONOLOGY

1. Significant Events. Air contributions to the mission of 3d Battalion, 3d Marines during the month of February 1967 included. Movement of troops, aerial observation and extensive TPQ-10 missions.

2. New Developments. None.

3. Problem Areas. None.

4. Contributions. None.

5. Air Support and Defense.

a. Number of close Air Support Missions. None.

b. Target Analysis and Ordnance Expended. None.

c. Number and Type of Air Missions Requested.

(1) Troops	7 for 705 troops
(2) Recon	4
(3) Med Evac	7
(4) Spot/Observe	4
(5) Gunships on station	1
(6) TPQ-10 strikes	510

d. Number and Type of Air Missions completed.

(1) Troops	7 for 705 troops
(2) Recon	4
(3) Med Evac	7
(4) Spot/Observe	4
(5) Gunships on station	1
(6) TPQ-10 strikes	510

6. Air Defense Capabilities. N/A.

ENCLOSURE (5)



MEDICAL AND DENTAL SUPPORT (SURG)

- A. NAME OF SURGEON: LT JON H. DODSON MC USNR  
ASS'T SURGEON: LT JAMES G. GLEASON MC USNR
- B. SIGNIFICANT EVENTS: Nothing to report
- C. MEDICAL TRENDS: Nothing to report.
- D. NUMBER OF BATTLE CASUALTIES: 42  
 1. Hostile: 29  
 2. Non-Hostile: 13
- E. NUMBER OF NON BATTLE PATIENTS TREATED: 444  
 1. (a) Laceration: 04  
     (b) Trauma: 03  
     (c) Burns: 00  
     (d) Diarrhea: 17  
 2. Number of Referrals to D-Med: 173  
 3. Cases of Significant Disease: 00  
 4. Cases of Venereal Disease: 06  
     a. Acquired in Country: 00  
     b. Acquired out of Country: 06
- F. PREVENTIVE MEDICINE AND SANITATION:  
 1. Number of Innoculations: 76 (R&R)  
 2. Other: All personnel are participating in the malaria prophylaxis program weekly, on Sundays.
- G. CIVIL AFFAIRS MEDICAL SUPPORT RENDERED:  
 1. One company is presently participating in civic action. The corpsmen from that company treated approximately 200 civilians for various ailments.
- H. PROBLEM AREAS: Nothing to Report.
- I. DENTAL REFERRALS: 81

## COMMUNICATION-ELECTRONICS CHRONOLOGY

1. Significant Events. The communication platoon was engaged in "Operation Prairie II" during the month of February. The communication platoon provided and maintained the necessary radio nets, wire systems, and message center, both forward and rear.

2. New Developments. None

3. Problem Areas. The lack of waterproofing material and the large amount of rainfall are causing a large drain on dry cell batteries and radio and wire equipment.

4. Other Contributions. None

5. Status of Communication Equipment.

a. The status of the communication equipment is very good.

b. The percentage of combat equipment available normally exceeds 90%.

6. Inoperative or Unserviceable Equipment.

a.	1	KY-8	Voice Scrambler
b.	1	AN/MRC-109	Radio Jeep
c.	1	AN/MRC-83	Radio Jeep
d.	2	AN/TPS-21	Radar Set
e.	2	AN/PKC-25	Radio Set
f.	2	AN/GKA-39	Remote Set
g.	1	AN/GRM-55	Middle Test Set

7. Security Violations. None

a. The message center received 646 incoming and sent 70 outgoing messages during this period.

8. Personnel Shortages and Overages.

a.	1	2511	Wireman	Sgt.	Short
b.	2	2511	Wireman	Cpl.	Over
c.	12	2511	Wireman	LCpl/PFC	Over
d.	1	2529	Communication Chief	GySgt.	Over
e.	4	2531	Radioman	Sgt.	Over
f.	3	2531	Radioman	Cpl.	Over
g.	6	2531	Radioman	LCpl/PFC	Over
h.	1	2533	Radio Telegraph Operator	Cpl.	Short
i.	8	2533	Radio Telegraph Operator	LCpl/PFC	Short
j.	1	2541	Teletype Operator	Cpl.	Short
k.	1	2543	Message Center Man	SSgt.	Short
l.	3	2543	Message Center Man	Sgt.	Over
m.	1	2543	Message Center Man	LCpl/PFC	Over
n.	1	2841	Radio Repairman	LCpl/PFC	Over

e.	1	2847	Radio/Crypto Repairman	Cpl.	Over
p.	1	1341	Generator Repairman	LCpl/PFC	Short
q.	2	5931	Radar Technician	Sgt.	Short
r.	1	5931	Radar Technician	Opl.	Over

9. Operational Training Conducted. This period was spent in on the job training for all sections which included interchanging of communications personnel between Military Occupational Specialties.

10. Summary of Operations. The communication platoon participated in "Operation Prairie II".

11. Equipment and Personnel located in areas other than the Phu Bai - Dong Ha Combat areas. None

Artillery, Naval Gunfire and Fire Support Coordination Chronology

1. Significant Events. 17 February 1967 two FO teams and one liaison team moved from (983546) to vicinity (899498) with Battalion (-). 27 February 1967 two FO teams and one liaison moved from (983546) to vicinity (963558) for sweep west of Razorback Ridge.

2. New Developments. None.

3. Problem Areas. None.

4. Other Contributions under the cognizance of each Executive/Staff Officer. None.

5. Artillery.

a. Units providing direct and general support.

- (1) Btry "C", 1st Bn, 12th Marines.
- (2) Btry "A", 1st Bn, 12th Marines.
- (3) Btry "B", 1st Bn, 12th Marines.
- (4) Btry "M", 4th Bn, 12th Marines.
- (5) Btry "B", 1st Bn, 40th Artillery USA.
- (6) Btry "B" and "C", 2nd Bn, 94th Artillery USA.
- (7) Btry "C", 1st Bn, SPAW, 44th Artillery USA.
- (8) Co "A", 2nd Plt., 3rd A.T. Bn.
- (9) Co "A", 1st Plt., 3rd Tank Bn.

b. Missions Fired.

(1) Target of Opportunity	158
(2) Precision Destruction	2
(3) Precision Registration	4
(4) Fire for Effect	127
(5) Recon by Fire	45
(6) Prep Fire	6

ENCLOSURE (8)

(7)	Counter Mortar	60
(8)	Practice	00
(9)	N.D.P.	30
(10)	Neutralization	1
(11)	Direct Fire	00
(12)	Time on Target	4
(13)	Marking Round	00
(14)	H & I's	1312
c.	<u>Mortars</u>	
(1)	Target of Opportunity	71
(2)	Recon by Fire	14
(3)	Fire for Effect	121
(4)	Prep Fire	43
(5)	H & I's	1330
(6)	Time on Target	1
d.	<u>Ontos</u>	
(1)	Target of Opportunity	00
(2)	H & I's	214
e.	<u>Tanks</u>	
(1)	Target of Opportunity	00
(2)	H & I's	90
f.	<u>Twin 40's</u>	
(1)	Target of Opportunity	2
(2)	H & I's	28

ENCLOSURE (8)



g. Total number rounds fired by type.

<u>Type</u>	<u>No rds.</u>
105 HE	6275
105 WP	245
105 Illum	175
105 Smk	6
105 VT	71
155 HE	228
155 WP	1
155 Illum	1
175 HE	264
175 WP	00
81 HE	3303
81 WP	184
81 Illum	588
106 HE	214
90 HE	90
90 WP	00
40 HE	7400

6. Surveillance.

## a. Counter Mortar plan activated in zones:

(1) Uniform	5
(2) Whiskey	5
(3) Sierra	3

ENCLOSURE (8)

Notes: All times H unless  
otherwise indicated.

3d Battalion, 3d Marine  
Opened: 010001 Feb 1967  
Closed: 012400 Feb 1967

TIME		SSR	DTG	MESSAGES, ORDERS, INCIDENTS.	ACTION
IN	OUT	#			S, S, T, F
0055		1	010055	PL-P3: LA 2 departed.	S/F
0350		2	010350	PK-P3: KA 1 returned.	S/F
	0500	3	010500	S3-C3: SitRpt 01-67 as of 010500.	S/F
0520		4	010520	SI-S3: IA 2 returned.	S/F
0545		5	010545	SI-S3: IA 1 returned.	S/F
0615		6	010615	PL-P3: LA 1 returned.	S/F
0710		7	010710	PL-P3: LA 3 returned.	S/F
0730		8	010730	PL-P3: LA 3 returned.	S/F
0730		9	010730	PK-P3: KP 2 departed.	S/F
0800		10	010800	PI, PI-P3: IP 3 and IP 1 departed.	S/F
0830		11	010830	PL-P3: LP 1 departed.	S/F
	1100	12	011100	S3-C3: SitRpt 01-67 as of 011100.	S/F
1230		13	011230	PL-P3: LP 2 departed.	S/F
1400		14	011400	PL-P3: LP 1 returned.	S/F
	1615	15	011615	S3-C3: Spot Report: Sub spot report 311803. At 011610 coordinates (976531) Company I patrol searched area with negative results where "B" Btry (SP) USA observed one enemy.	S/F
	1630	16	011630	S3-C3: Spot Report: At 011430H Coordinates (972451). KP 2 discovered an enemy company size base camp consisting of 3 large huts one of which would house about 20 men. Main portion of hut very old, but small areas appear to have been built within the last week. Complete search revealed drinking cup and empty food containers. Found trail that leads to the huts to be well used leading to Route #9. Trail about 2 ft wide.	S/F
	1640	17	011640	S3-C3: Spot Report: At 011620H Coordinates (972451). KP 2 made contact with 20 NVA, well equipped and wearing brown uniforms, moving south. Arty mission called in vicinity of above coordinates with good target coverage, results unknown.	S/F
	1800	18	011800	S3-C3: Spot Report: At 011700H Coordinates (972451). Company Kilo was burning base camp when they observed 20 NVA in area. During fire fight 2 NVA were hit and fell. Arty fire mission called with excellent target coverage, results unknown. Company Kilo with 2 plts is moving along Rt #9 to link up with KP 2. AO on station reports LZ about 600 meters south of area where action initially took place.	S/F
	1800	19	011800	P3-PK6: Have 2nd Plt stand by on order from this CF.	S/F
	1800	20	011800	P6-PK6: Start moving down Rt #9 with one more plt. Look for LZ position along Rt #9 for a possible pick up. Find trail junction and start working towards KP 2.	S/F

ENCLOSURE (9)

Note: All times H unless  
otherwise indicated.

3d Battalion, 3d Marines  
Opened: 010001 Feb 1967  
Closed: 012400 Feb 1967

IN	TIME	SER	DTG	MESSAGES, ORDERS, INCIDENTS.	ACTION M.S.T.F.
	1945	21	011945	S3-C3: Spot Report: At 011840H Coordinates (977488). KP 2 moving S. E. as directed by Battalion 6 made contact with an undetermined number of enemy at above time and coordinates. AO observed KP 2 and enemy and states that the distance was to close for Arty fire mission. K6 is located approximately 450 meters S.E. of KP 2 and closing.	S/F
	1945	22	011945	P6-PK6: KP 2 fix by AO was wrong. KP 2 new position is 977449) 600 meters south of the trail that runs over the bridge.	S/F
	2045	23	012045	S3-C3: Spot Report: At 011945H coordinates (980447). Company Kilo linked with Company Kilo patrol #2 at above time and coordinates. Negative contact and it is felt that the enemy is moving around the flanks of Co K to establish an ambush to the rear. Immediate plans are as follows: 1 plt will depart present location and return to (984438) and set in. K6 with 1 plt will continue to search area in an effort to establish contact or drive enemy south into K3. Present plans are to spend approx 3 hrs in this area. All advise when plans change or when Co K is directed to return to CP.	S/F
	2120	24	012120	S3-C3: Spot Report: At 011730 coordinates (967568). LP 2 at above time and coordinates found enemy 60mm mortar base plate. Area in vic searched with negative results. Base plate to be forwarded to 3d Marines CP.	S/F
	2120	25	012120	S3-C3: Spot Report: At 011730 coordinates (967568). LP 2 found enemy 60mm mortar base plate at above time and coordinates. Item is same as previous one found and in better shape. To be forwarded to 3d Marines CP.	S/F
	2145	26	012145	S3-C3: Spot Report: At 012130 coordinates (980477). K6 with 1 plt enroute to join up with 3rd plt, located at (984438). As soon as link up is made Company Kilo will return to their CP.	S/F
	2300	27	012300	S3-C3: SitRep 01-67 as of 2300.	S/F
2000	LE	28	012000	PK6-F3: K6 position is (980447)	

Note: All times H unless  
otherwise indicated.

3d Battalion, 3d Marines  
Opened: 020001 Feb 1967  
Closed: 022400 Feb 1967

TIME		SER	DTG	MESSAGES, ORDERS, INCIDENTS.	ACTION M.S.T.F
IN	OUT	#			
	0025	29	020025	P3-PK6: Based on your recommendation your orders are as follows: Stay in your present position vic of coord (983439) until link up with K3 is completed. K6 with K2 depart for K CP. Leave K3 in ambush at above coord until first light.	S/F
0130		30	020130	PL-P3: LA 1 returned.	S/F
	0500	31	020500	S3-C3: SitRep 02-67 as of 020500.	S/F
	0645	32	020645	P3-PK6: Ref your 020420. Conduct normal day light activities as scheduled. KP 1 reinforced plt idea is approved. No further instructions at this time.	S/F
LE	2030	33	012030	S3-C3: Spot Report: At 011915H coord (974532). IA 1 observed 1 enemy at above time and coord. Due to poor light no description could be made. 81mm mortar fire mission called with excellent target coverage. Area searched with negative results.	S/F
	0830	34	020830	S3-C3: Final Spot Report on Company Kilo action. Initial contact was made with 20 NVA wearing khaki uniforms and carrying packs and weapons. During initial shots KP 2 saw 2 enemy fall. NVA unit withdrew. Arty fired 5 missions on enemy. K6 with 2 plts (-) moved overland and effected link up. During this time contact was made with VC dressed in black PJ's. K6 established one plt in a ambush at deserted village coord (983438) and remainder of 2nd plt. Platoon in ambush site returned to K CP at 020400 with out further enemy contact.	S/F
0830		35	020830	SI-S3: IA 1 returned.	S/F
0915		36	020915	SI-S3: IP 1 departed.	S/F
1030		37	021030	PL-P3: We are exchanging sqds on Rock File, will advise when completed. Request list of frags. sent to this position on first available transportation.	S/F
	1100	38	021100	S3-C3: SitRep 02-67 as of 021100.	S/F
1610		39	021610	SI-S3: IP 1 returned.	S/F
	1705	40	021705	S3-C3: SitRep 02-67 as of 021700.	S/F
	1710	41	021710	S3-C3: Spot Report: Landing elements of Co M returning to 3/3 CP at 021710.	S/F
1730		42	021730	PK-P3: KP 1 returned and IA 2 departed.	S/F
1910		43	021910	PL-P3: LA 1 and LA 2 departed.	S/F
	2045	44	022045	S3-C3: Spot Report: At 021815 all elements of Co M arrived this CP.	S/F
	2320	45	022320	S3-C3: SitRep 02-67 as of 022300.	S/F

ENCLOSURE (9)



## DECLASSIFIED

Note: All times H unless  
otherwise indicated.

3d Battalion, 3d Marines  
Opened: 030001 Feb 1967  
Closed: 032400 Feb 1967

TIME		SER	DTG	MESSAGES, ORDERS, INCIDENTS.	ACTION
IN	OUT	#			M.S.T.F
0015		46	030015	PL-P3: LA 3 departed.	S/F
0115		47	030115	PL-P3: LA 2 returned.	S/F
0310		48	030310	SI-S3: IA 2 returned.	S/F
	0500	49	030500	S3-C3: SitRep 3-67 as of 030500.	S/F
0550		50	030550	PL-P3: LA 3 returned.	S/F
0600		51	030600	SI-S3: IA 1 returned.	S/F
0640		52	030640	PL-P3: LP 2 departed.	S/F
0700		53	030700	SI-S3: IP 1 departed.	S/F
0740		54	030740	PI-P3: LA 1 returned.	S/F
0800		55	030800	PK-P3: KA 1 returned.	S/F
	0810	56	030810	S3-C3: Ref (a) 3dBn3dMar Reg Order 5-67. The area of operation specified in ref (a) extends beyond 3dBn3dMar assigned AO. It is therefore requested that special clearance be given for subject operation. AO requested is bounded by GS (9547), (9642), (0045), (0047).	S/F/M
0900		57	030900	PK-P3: KP 3 departed.	S/F
0930		58	030930	PL-P3: LP 3 departed.	S/F
0930		59	030930	PL-P3: LP 1 departed.	S/F
0940		60	030940	C3-S3: Ref (a) your 030755. AO requested is approved and cleared for operation in accordance with your Reg Order 5-67 from 3-5Feb67.	S/F/M
	1135	61	031135	S3-C3: SitRep 3-67 as of 031100.	S/F
	1210	62	031210	S3-C3: Spot Report: At 031140 coord (965576). LP 1 detonated a rigged chi com grenade along side of trail. Grenade was camouflaged. One Marine KIA. Marine was in Med Evac at 031235.	S/F
1310		63	031310	PL-P3: LP 3 returned.	S/F
1700		64	031700	SI-S3: IA 2 departed.	S/F
1700		65	031700	SI-S3: IA 1 departed.	S/F
	1700	66	031700	S3-C3: SitRep 3-67 as of 031700.	S/F
1740		67	031740	PL-P3: LP 1 returned.	S/F
1910		68	031910	PI, PL-P3: IP 1 returned. LA 1 departed.	S/F
	1910	69	031910	S3-C3: Spot Report: At 031850 coord (974537). Co I observed one enemy moving in the direction of hill 100. Uniform and equipment not observed. 81mm mortar fire mission called with excellent target coverage. Squad sent to search area with negative results.	S/F
2010		70	032010	PK-P3: KA 1 departed.	S/F
2250		71	032250	PL-P3: LA 2 departed.	S/F
	2325	72	032325	S3-C3: SitRep 3-67 as of 032300.	S/F

ENCLOSURE (9)



DECLASSIFIED

Note: All times H unless  
otherwise indicated.

3d Battalion, 3d Marines

Opened: 040001 Feb 1967

Closed: 042400 Feb 1967

TIME		SER	DTG	MESSAGES, ORDERS, INCIDENTS.	ACTION M.S.T.F.
IN	OUT	#			
0026		73	040026	PL-P3: LA 3 departed.	S/F
0325		74	040325	PK-P3: KA 1 returned.	S/F
0325		75	040325	PL-P3: LA 2 returned.	S/F
	0500	76	040500	S3-C3: SitRep 4-67 as of 040500.	S/F
	0606	77	040606	S3-C3: Spot Report: At 040606 coord (982545). Co I commenced operation in accordance with Frag Order 4-67.	S/F
0610		78	040610	SM-S3: MA 2 returned.	S/F
0610		79	040610	SI-S3: IA 1 returned.	S/F
0615		80	040615	PL-P3: LA 3 returned. LP 3 departed.	S/F
	0626	81	040626	S3-C3: Spot Report: At 040626 coord (012455). Co K commenced operation in accordance with Frag Order 5-67.	
0729		82	040729	SM-S3: MP 1 departed.	S/F
0740		83	040740	PL-P3: LP 2 departed. LA 1 returned.	S/F
	0815	84	040815	S3-C3: It is requested that authority be given this command to displace D/S artillery in support of Operation Plan 1-67.	S/F/H
	0830	85	040830	S3-C3: Spot Report: At 040820 coord (981542). "B" Btry 1st Bn 40th Artillery USA displaced to Ca Lo in support of Co K.	S/F
	0915	86	040915	S3-C3: Spot Report: At 040905 coord (012455). "B" Btry 1st Bn 40th Artillery USA arrived at Co K CP.	S/F
	1100	87	041100	S3-C3: Spot Report: At 041030 coord (985566). LP 3 found large enemy bunker at above time and coord. Search of the area made with negative results. Bunker destroyed.	S/F
	1100	88	041100	S3-C3: SitRep 4067 as of 041100.	S/F
1125		89	041125	PL-P3: LP 2 returned.	S/F
	1230	90	041230	S3-C3: Spot Report: At 041126 coord (963567). LP 3 discovered possible VC bunker, 5 ft wide, 6 ft long, 3 ft deep covered with thick branches and 3 ft of earth. Destroyed with satchel charge.	S/F
	1235	91	041235	S3-C3: Spot Report: At 041120 coord (992567). LP 2 discovered 14 fresh holes 4 ft square by 2 ft deep, set in a VC ambush formation.	S/F
	1315	92	041315	S3-C3: Spot Report: At 041220 coord (961572). LP 3 discovered a chi com grenade tied to a tree with a vine extended across trail 18 inches above trail. Grenade destroyed in place.	S/F
1530		93	041530	SM-S3: MP 1 returned.	S/F
	1615	94	041615	S3-C3: Spot Report: At 041615 coord (965577). One member of LP 3 patrol received wound in the right thigh from an undetermined type of explosive device. Marine air Med Evac completed at 041735.	S/F

ENCLOSURE (9)

Note: All times H unless  
indicated.

Opened: 040001 Feb 1967  
Closed: 042400 Feb 1967  
3d Battalion, 3d Marines

TIME		SER	DTG	MESSAGES, ORDERS, INCIDENTS.	ACTION
IN	OUT	#			M, T, F
1730		95	041730	SM-S3: MA 1 departed,	S/F
	730	96	041730	S3-C3: SitRep 4-67 as of 041700.	S/F
1750		97	041750	SM-S3: MA 2 departed,	S/F
1750		98	041750	SM-S3: MA 3 departed.	S/F
1845		99	041845	PL-P3: LP 1 returned,	S/F
	1840	100	041840	S3-C3: It is requested that authority be delegated to this command to displace D/S artillery in support of 3dBn3dMar operation order 1-67 when warranted,	S/F
	1900	101	041900	S3-C3: Spot Report: At 041755 coord (967568). LP 1 at above time and coord discovered 5-60mm mortar rounds with fuse, 1 carbine magazine, 1 machine gun magazine, 15 rds carbine ammo. All items destroyed.	S/F
1905		102	041905	PL-P3: LA 1 departed,	S/F
2010		103	042010	PL-P3: LP 3 returned,	S/F
2035		104	042035	PL-P3: LA 2 departed,	S/F
	2105	105	042105	S3-C3: Spot Report: At 042105 coord (991523). IP 1 ambush approximately 150 meters from the PPB heard movement and noise estimated from 3-5 people. While awaiting to spring ambush, PPB received 5-7 S/A fire from an estimated distance of 300 meters. Rds came from S.E. At the same time the ambush site received 1 incoming grenade. Arty mission called with good target coverage, results unknown.	S/F
	2140	106	042140	S3-C3: Spot Report: At 042140 coord (991523). Co I PPB received 20 rds of A/W fire from S.E. Arty mission called with good target coverage, results unknown.	S/F
	2300	107	042300	S3-C3: SitRep 4-67 as of 042300.	S/F

Notes: 1. Times H unless  
otherwise indicated.

3d Battalion, 3d Marines  
Opened: 050001 Feb 1967  
Closed: 052400 Feb 1967

TIME		SER	DTG	MESSAGES, ORDERS, INCIDENTS.	ACTION
IN	OUT	#			M.S.T.E
0035		108	050035	PL-P3: LA 3 departed.	S/F
0100		109	050100	PL-P3: LA 2 returned.	S/F
	0500	110	050500	S3-C3: SitRep 5-67 as of 050500.	S/F
0635		111	050635	PL-P3: LP 2 departed.	S/F
0645		112	050645	SM-S3: MA 2 returned.	S/F
0655		113	050655	SM-S3: MA 1 returned.	S/F
0655		114	050655	PL-P3: LA 3 returned.	S/F
0700		115	050700	SM-S3: MA 3 returned.	S/F
0720		116	050720	PL-P3: LA 1 returned.	S/F
0735		117	050735	SM-S3: MP 1 departed.	S/F
0750		118	050750	SM-S3: MP 2 departed.	S/F
0810		119	050810	PL-P3: LP 1 departed.	S/F
	1100	120	051100	S3-C3: SitRep 5-67 as of 051100.	S/F
	1355	121	051355	S3-C3: Spot Report: At 051245 coord (033448). At above time and coord KP 1 received 1 sniper rd from the S.E. Distance 300 meters. Observed 4-5 VCS approximately 400 meters running in S.E. direction. Area search with negative results.	S/F
1445		122	051445	P3-PI: Due to operation being conducted by Co I you will not be required to conduct ambush tonight. Co M will take IA 1 and it will be MA 3.	S/F
	1525	123	051525	S3-C3: Spot Report: At 051245 coord (967657). LP 1 located enemy ambush point. Search of area revealed small quantities of enemy equipment and ammo.	S/F
1530		124	051530	PL-P3: LP 3 returned.	S/F
1550		125	051550	SM-S3: MP 1 returned.	S/F
1610		126	051610	PK-P3: KP 1 returned.	S/F
1630		127	051630	SM-S3: MP 2 returned.	S/F
1645		128	051645	PL-P3: LP 1 returned.	S/F
	1650	129	051650	S3-C3: Day and night activities for 070730-071630.	S/F
	1700	130	051700	S3-C3: SitRep 5-67 as of 051700.	S/F
1805		131	051805	SM-S3: MA 1 departed.	S/F
1830		132	051830	SM-S3: MA 2 departed.	S/F
1835		133	051835	SM-S3: MA 3 departed.	S/F
1840		134	051840	PL-P3: LP 2 returned.	S/F
1855		135	051855	PL-P3: LA 1 departed.	S/F
1935		136	051935	PL-P3: LA 2 departed.	S/F
	2140	137	052140	S3-C3: Reference day time activity of Co K of 6 Feb. Information that villagers from the village of Phu Thanh coord (047444) have moved in mass, to the village of La Cat. KP 3 as presently scheduled is cancelled. KP 3 will be diverted into La Cat in an attempt to gain information from the villagers regarding their movement.	S/F
	2310	138	052310	S3-C3: SitRep 5-67 as of 052300.	S/F
2348		139	052348	PL-P3: LA 3 departed.	S/F

ENCLOSURE (9)



Notes: All times H unless  
otherwise indicated.

Opened: 060001 Feb 1967  
Closed: 062400 Feb 1967

TIME		SER	DTG	MESSAGES, ORDERS, INCIDENTS.	ACTION
IN	OUT	#			M.S.T.F
0130		140	060130	PL-P3: LA 2 returned.	S/F
0425		141	060425	SM-S3: MA 1 and MA 2 returned.	S/F
	0500	142	060500	S3-C3: SitRep 6-67 as of 060500.	S/F
0600		143	060600	SM-S3: MP 1 departed.	S/F
0615		144	060615	PL-P3: LA 3 returned.	S/F
0625		145	060625	PL-P3: LP 3 departed.	S/F
0700		146	060700	SM-S3: MA 3 returned. MP 2 departed.	S/F
0715		147	060715	PL-P3: LA 1 returned. IP 2 departed.	S/F
	0750	148	060750	S3-C3: Co M commenced operation in accordance with 3dBn Reg Order 6-67 at 060600.	S/F
0715		149	060715	PK-P3: KP 3 departed.	S/F
LE	0925	150	060925	P3-PK: Co K cancel KP 3 060900-061500. Send 1 (+) squad plus RF squad to conduct census at (025455). Patrol will be KP 3 060700-061600. Reference pt remain the same, also have interpreter go.	S/F
	1100	151	061100	S3-C3: SitRep 6-67 as of 061100.	S/F
1220		152	061220	SM-S3: MP 2 returned.	S/F
	1250	153	061250	S3-C3: Spot Report: At 060900 coord (971507). MP 3 discovered 5 fighting holes 1 or 2 months old at above time and coord. Patrol demolished roofs and destroyed holes as much as possible.	S/F
1300		154	061300	PL-P3: LP 1 returned.	S/F
	1440	155	061440	S3-C3: Spot Report: At 061305 coord (968451). At above time and coord KP2C a Sqd patrol saw 5 persons w/ weapons, wearing shorts, sandals and packs they were not within rifle range. KP2C started pursuing the enemy and has made contact with an undetermined force. KP2 is enroute to KP 2C position. AO requested and on station. Med Evac requested for 1 MIA.	S/F
	1455	156	061455	S3-C3: Spot Report: At 061400 coord (968451). At above time and coord KP 2C lost contact with enemy. Proceeding now to HLZ to await for Med Evac.	S/F
1540		157	061540	SI-S3: IP 1 returned.	S/F
	1630	158	061630	S3-C3: Spot Report: At (966452) KP 2C point sighted 5 enemy with packs and weapons. Opened fire. Enemy fled back down trail. KP 2C gave chase. regained contact found 200 lbs of rice. Enemy fled NNW.	S/F
	1700	159	061700	S3-C3: Spot Report: Med Evac completed at 061526. KP 2C is searching area where contact was made with enemy. Found 2-100 lb bags of rice which they destroyed. When KP 2C point fired on enemy two fell by the trail. Search conducted with negative results.	

ENCLOSURE (9)

Note: All times H unless  
otherwise indicated.

3d Battalion, 3d Marines

Opened: 060001 Feb 1967

Closed: 062100 Feb 1967

TIME		SER	DTG	MESSAGES, ORDERS, INCIDENTS.	ACTION
IN	OUT	#			M.S.T.F
	1740	160	061710	S3-C3: SitRep 6-67 as of 061700.	S/F
1715		161	061715	PL-P3: LP 3 returned.	S/F
1725		162	061725	SM-S3: MA 1 departed.	S/F
1730		163	061730	SI-S3: IA 1 departed.	S/F
1730		164	061730	SI-S3: IP 2 returned.	S/F
	1745	165	061745	S3-C3: Spot Report: At 061345 coord (971451). K2B while searching area at above time and coord saw 2 enemy, 1 in khaki shorts, one in black PJ's. K2B took enemy under fire one enemy was hit and fell, the other was wounded. In attempting to close on the enemy K2B came under A/V fire. Fire return with S/A and M-79. Firing lasted 1 min, then K2B searched the area. Found two separate trails of blood. K2B followed the blood trail a short distance without further contact.	S/F
1805		166	061805	SI-S3: IA 2 departed.	S/F
1900		167	061900	PL-P3: LA 1 departed.	S/F
	1940	168	061940	S3-C3: Spot Report: At 061655 coord (979448). KP 2 point saw 3 VC in black clothing. Point opened fire and saw one hit and being helped off by other VC.	S/F
	2130	169	062130	S3-C3: Spot Report: At 062105 coord 988542. One plt from 1st Btry 4/12 arrived this CP.	S/F
	2300	170	062300	S3-C3: SitRep 6-67 as of 062300.	S/F
2315		171	062315	PL-P3: At 2200 LA 2 departed.	S/F

ENCLOSURE (9)



Note: All times H unless  
otherwise indicated.

3d Battalion, 3d Marines  
Opened: 070001 Feb 1967  
Closed: 072400 Feb 1967

TIME		SER	DTG	MESS G.S. ORDERS, INCIDENTS.	ACTION M.S.T.F
IN	OUT	#			
0020		172	070020	PL-P3: LA 3 departed.	S/F
0155		173	070155	PL-P3: LA 1 returned.	S/F
0300		174	070300	PL-P3: LA 3 returned.	S/F
	0500	175	070500	S3-C3: SitRep 7-67 as of 070500.	S/F
0620		176	070620	SI-S3: IA 2 returned.	S/F
0625		177	070625	SM-S3: MA 1 returned.	S/F
0655		178	070655	SI-S3: IA 1 returned.	S/F
0705		179	070705	SI-S3: IP 1 departed.	S/F
0715		180	070715	PL-P3: LA 3 returned.	S/F
0715		181	070715	PL-P3: LP 1 departed.	S/F
0720		182	070720	PL-P3: LA 1 returned.	S/F
0725		183	070725	SM-S3: MP 3 departed.	S/F
0730		184	070730	SI-S3: MP 1 departed.	S/F
	1106	185	071106	S3-C3: Spot Report: At 071015 coord (984589). At above time and coord Co M OP observed 2 enemy moving into treeline. Distance too far to observe clothing and weapons. Moving North to North East. Arty fire mission called with excellent target coverage, results unknown.	S/F
	1120	186	071120	S3-C3: SitRep 7-67 as of 071100.	S/F
	1137	187	071137	S3-C3: Spot Report: At 071110 coord (012455). KP 2 return to Co K CP after completing mission assigned in 3dBn Frag Order 5-67.	S/F
	1205	188	071205	S3-C3: Spot Report: At 071115 coord (960493). At above time and coord MP 3 found an old base camp with tunnels, huts, punji stakes. Estimate to be about 1 year old. No recent activity in the camp. Search made with negative results.	S/F
	1235	189	071235	S3-C3: Spot Report: At 071035 coord (969569). At above time and coord LP 1 found 6 Chinese ammo cans (empty), 3 8mm AP rds, 1 AK-47 magazine and used military clothing.	S/F
1510		190	071510	PK-P3: KP 1 returned.	S/F
1610		191	071610	PL-P3: LP 3 returned.	S/F
1630		192	071630	SI-S3: IP 1 returned.	S/F
1630		193	071630	SM-S3: MP 1 returned.	S/F
	1740	194	071740	S3-C3: SitRep 7-67 as of 071700.	S/F
1740		195	071740	PL-P3: LA 1 departed.	S/F
1800		196	071800	PL-P3: LP 1 returned.	S/F
1800		197	071800	SI-S3: IA 2 departed.	S/F
1820		198	071820	SI-S3: IA 3 departed.	S/F
1910		199	071910	PL-P3: LA 2 departed.	S/F
2050		200	072050	PK-P3: KA 3 departed.	S/F
	2300	201	072300	S3-C3: SitRep 7-67 as of 2300.	S/F

ENCLOSURE (9)

Note: All time H unless  
otherwise indicated.

3d Battalion, 3d Marines

Opened: 080001 Feb 1967

Closed: 082100 Feb 1967

TIME		SER	DTG	MESSAGES, ORDERS, INCIDENTS.	ACTION
IN	OUT	#			M.S.T.F
0100		202	080100	PI-P3: LA 3 departed.	S/F
0130		203	080130	PL-P3: LA 2 returned.	S/F
0400		204	080400	PK-P3: KA 1 returned.	S/F
	0500	205	080500	S3-C3: SitRep 8-67 as of 080500.	S/F
0635		206	080635	SI-S3: IA 3 returned.	S/F
0650		207	080650	SI-S3: IA 2 returned.	S/F
0700		208	080700	PL,PI-P3: LA 3 returned. IA 1 returned.	S/F
0710		209	080710	PL-P3: LP 2 departed. IA 1 returned.	S/F
0730		210	080730	PK-P3: KP 1 departed.	S/F
0735		211	080735	PL-P3: LP 1 departed.	S/F
0815		212	080815	PL,PI-P3: LP 3 and IP 2 departed.	S/F
0900		213	080900	SM-S3: MP 1 departed.	S/F
	0945	214	080945	P3-PK: Request all available information on LZ at (975458) that KP 2 reported 4Feb67.	S/F
	1100	215	081100	S3-C3: SitRep 8-67 as of 081100.	S/F
1415		216	081415	SM-S3: MP 3 returned.	S/F
1615		217	081615	PM,L,I-P3: MP1, LP1, LP2 and IP2 returned.	S/F
1630		218	081630	PL-P3: LP 3 returned.	S/F
	1700	219	081700	S3-C3: SitRep 8-67 as of 081700.	S/F
	1750	220	081750	P3-PK6: Commencing 090730 move one platoon (-) to GS (9742). Establish a PPB.	S/F
1750		221	081750	SI-S3: IA 1 and IA 2 departed.	S/F
1755		222	081755	PK-P3: KP 1 returned at 1725.	S/F
1825		223	081825	PL,I-P3: LA 1 and IA 3 departed.	S/F
1915		224	081915	PL-P3: LA 2 departed.	S/F
1930		225	081930	PK-P3: KA 1 departed.	S/F
	2053	226	082053	P3-PK: Request you send 1 scout with KP 3. Scout is to bring back following info: Possible HIZ's. Crossing or fording points. Upon completion of mission be prepared to submit detailed report.	S/F
	2127	227	082127	P3-PK: Reference TET there is no curfew for civ during this period.	S/F
	2300	228	082300	S3-C3: SitRep 8-67 as of 082300.	S/F
2300		229	082300	PL-P3: LA 3 departed.	S/F

ENCLOSURE (9)

Note: All times H unless  
otherwise indicated.

3d Battalion, 3d Marines

Opened: 090001 Feb 1967

Closed: 092400 Feb 1967

TIME		SER	DTG	MESSAGES, ORDERS, INCIDENTS.	ACTION
IN	OUT	#			M.S.T.F
0115		230	090115	PL-P3: LA 2 returned.	S/F
	0500	231	090500	S3-C3: SitRep 9-67 as of 090500.	S/F
0625		232	090625	SI-S3: IA 3 returned.	S/F
0640		233	090640	PL-P3: LA 3 returned and LP 2 departed.	S/F
0650		234	090650	PL-P3: LP 3 departed.	S/F
0655		235	090655	SI-S3: IA 1 returned.	S/F
0720		236	090720	SI-S3: IA 2 returned.	S/F
0720		237	090720	SM-S3: MP 1 departed.	S/F
0725		238	090725	PL-P3: LA 1 returned.	S/F
0745		239	090745	PK-P3: KP 3 departed.	S/F
0800		240	090800	PK,PI-P3: KA 1 returned and IP 1 departed.	S/F
	1100	241	091100	S3-C3: SitRep 9-67 as of 091100.	S/F
1400		242	091400	SM-S3: MP 1 returned.	S/F
1515		243	091515	PL-P3: LP 3 returned.	S/F
	1700	244	091700	S3-C3: SitRep 9-67 as of 091700.	S/F
1600		245	091600	PL-P3: LP 2 returned at 1600.	S/F
1800		246	091800	SI-S3: IA 1 departed.	S/F
1920		247	091920	SM-S3: MA 1 departed.	S/F
	2300	248	092300	S3-C3: SitRep 9-67 as of 092300.	S/F

ENCLOSURE (9)



## DECLASSIFIED

Note: All times H unless  
otherwise indicated.

3d Battalion, 3d Marines  
Opened: 100001 Feb 1967  
Closed: 102400 Feb 1967

TIME	STR	DTG	MESSAGES, ORDERS, INCIDENTS.	ACTION
IN	OUT	#		U.S.T.F
	0125	249	100125 S3-C3: Spot Report: At 100120 in vicinity of 3dBn CP Co M and Co L completed relief of lines.	S/F/M
	0500	250	100500 S3-C3: SitRep 10-67 as of 100500.	S/F
0650		251	100650 SI-S3: IA 1 returned.	S/F
0700		252	100700 PM-P3: MP 1 departed.	S/F
0730		253	100730 SI-S3: IP 1 departed.	S/F
0745		254	100745 PM-P3: MP 2 departed.	S/F
0800		255	100800 PM-P3: MP 3 departed.	S/F
0915		256	100915 SL-S3: LP 1 departed.	S/F
0950		257	100950 SL-S3: LP 2 departed.	S/F
	1015	258	101015 S3-C3: Spot Report: At 100830 coord (968569). At above time and coord MP 2 discovered a series of caves. Patrol searched the caves and found 3 unidentified rds, 5 7.62 mm rds, 1 chinese type mine. Mine was blown in place, followed with a secondary explosion. Cave was again searched with neg results.	S/F
	1026	259	101026 S3-C3: Spot Report: At 100930 coord (960424). Marine in KP 2 had a accidental discharge, wounding himself in right hip and right forearm. Med Evac completed at 101026.	S/F
	1100	260	101100 S3-C3: SitRep 10-67 as of 101100.	S/F
	1430	261	101430 S3-C3: Spot Report: At 101050 coord (963414) KP 3 found temporary bivouac area which would hold 50-75 people. Patrol made search of area with neg contact.	S/F
1530		262	101530 SI-S3: IP 1 returned.	S/F
1540		263	101540 SL-S3: LP 2 returned.	S/F
1555		264	101555 PM-P3: MP 3 returned.	S/F
1635		265	101635 PM-P3: MP 1 and MP 2 returned.	S/F
	1705	266	101705 S3-C3: Spot Report: At 101315 coord (967564) MP 2 had a non-battle causality, one Marine fell hurting his back. Air Med Evac completed at 1650.	S/F
	1715	267	101715 S3-C3: SitRep 10-67 as of 101700.	S/F
1800		268	101800 SI, SL-S3: IA 1 and IA 1 departed.	S/F
1810		269	101810 PM-P3: MA 2 departed.	S/F
1820		270	101820 PM-P3: MA 3 departed.	S/F
1835		271	101835 SL-S3: LA 2 departed.	S/F
2100		272	102100 PK-P3: KP 3 returned.	S/F
2200		273	102200 SL-S3: IP 1 returned.	S/F
	2300	274	102300 S3-C3: SitRep 10-67 as of 102300.	S/F

ENCLOSURE (9)

Note: All time H unless  
otherwise indicated.

3d Battalion, 3d Marines

Opened: 110001 Feb 1967

Closed: 112400 Feb 1967

TIME		SER	DTG	MESSAGES, ORDERS, INCIDENTS.	ACTION
IN	OUT	#			M.S.T.F
0020		275	110020	PM-P3: MA 1 departed.	S/F
	0500	276	110500	S3-C3: SitRep 11-67 as of 110500.	S/F
0645		277	110645	PM-P3: MA 1 returned.	S/F
0700		278	110700	SI-S3: IA 1 returned.	S/F
0705		279	110705	PM-P3: MP 1 departed and MA 3 returned.	S/F
0710		280	110710	PM-P3: MA 2 returned.	S/F
0715		281	110715	PM-P3: MP 3 departed.	S/F
0730		282	110730	SL-S3: LA 2 returned. IP 3 departed.	S/F
0755		283	110755	PL, M-P3: LA 1 returned and MP 2 departed.	S/F
0810		284	110810	SI-S3: IP 1 departed.	S/F
0825		285	110825	SL-S3: LP 1 departed.	S/F
1045		286	111045	PK-P3: KP 3 returned.	S/F
	1450	287	111450	S3-C3: SitRep 11-67 as of 111100.	S/F
1455		288	111455	SI-S3: IP 1 returned.	S/F
	1530	289	111530	S3-C3: Spot Report: At 111300 coord (991557) Co M reported seeing explosion at above coord. Squad sent to investigate and found dozer had hit what appears to be a mine. Dozer received a damaged blade. Explosion device was 10 ft off the road. Three engineer personnel minor wounds. Med Evac not requested.	S/F
1545		290	111545	PM-P3: MP 2 and 3 returned.	S/F
1600		291	111600	SL-S3: LP 3 returned.	S/F
1620		292	111620	SL-S3: LP 1 returned.	S/F
1645		293	111645	PM-P3: MP 1 returned.	S/F
	1700	294	111700	S3-C3: SitRep 11-67 as of 111700.	S/F
1845		295	111845	PM, L-P3: MA 1 and LA 1 departed.	S/F
1920		296	111920	PM-P3: MA 3 departed.	S/F
2030		297	111030	PM-P3: MA 2 departed.	S/F
	2300	298	112300	S3-C3: SitRep 11-67 as of 112300.	S/F

ENCLOSURE (9)



3d Battalion, 3d Marines

Opened: 120001 Feb 1967

Closed: 132400 Feb 1967

Note: All times H unless  
otherwise indicated.

TIME		SER	DTG	MESSAGES, ORDERS, INCIDENTS.	ACTION M.S.T.F.
IN	OUT	#			
0215		299	120215	PM-P3: MA 3 returned.	S/F
	0500	300	120500	S3-C3: SitRep 12-67 as of 120500.	S/F
0540		301	120540	SL-S3: LA 2 returned.	S/F
0620		302	120620	PM-P3: MA 1 and MA 2 returned.	S/F
0810		302	120810	PM-P3: MP 1 departed.	S/F
0830		303	120830	PM-P3: MP 2 departed.	S/F
	0835	304	120835	S3-C3: Spot Report: At 120725 coord (974566) Co M was firing their counter mortar plan when an explosion occurred close to perimeter wounding one Marine in the right arm. During investigation it was found that one of the tanks had a premature explosion. Surface Med Evac completed at 120930.	S/F
0850		305	120850	SL-S3: LP 1 departed.	S/F
0920		306	120920	SL-S3: LP 2 departed.	S/F
0940		307	120940	PM-P3: MP 3 departed.	S/F
	0950	308	120950	P3-PM: Change MP 1 to read CP#1 to CH#2 to CH#6 then home. You will not operate north of TW grid line 58 unless otherwise directed by S-3.	
	1115	309	121115	S3-C3: SitRep 12-67 as of 121100.	S/F
	1305	310	121305	S3-C3: Spot Report: At 121235 coord (965566) MP 2 while checking area made contact with approximately 1 squad of enemy. Engaged with S/I. MP 2 received 1 WIA. Med Evac requested.	S/F
1430		311	121430	PM-P3: MP 1 and MP 2 returned.	S/F
1430		312	121430	PL-P3: LP 1 and LP 2 returned.	S/F
	1545	313	121545	S3-C3: Spot Report: Refer to SR # 121235. At 121530 coord (965567). Enemy dress in green khaki uniforms armed with carbines moving west. 40mm fired in GS (9556) and (9557). Med Evac completed at 121400.	S/F
	1700	314	121700	S3-C3: SitRep 12-67 as of 121700.	S/F
1745		315	121745	SL-S3: LA 2 departed.	S/F
1825		316	121825	PM-P3: MA 2 departed.	S/F
1830		317	121830	SL-S3: LA 1 departed.	S/F
2000		318	122000	PM-P3: MA 1 departed.	S/F
	2300	319	122300	S3-C3: SitRep 12-67 as of 122300.	S/F
	2330	320	122330	S3-C3: Spot Report: At 122310 Co K departed Co K CP in accordance with 3/3 OpnO 1-67.	S/F

ENCLOSURE (9)

3d Battalion, 3d Marines

Opened: 120001 Feb 1967

Closed: 132400 Feb 1967

Note: All times H unless  
otherwise indicated.

IN	OUT	SER	DTG	MESSAGES, ORDERS, INCIDENTS.	ACTION M.S.T.F
0110		321	130110	PM-P3: MA 1 returned.	S/F
	0500	322	130500	S3-C3: SitRep 13-67 as of 130500.	S/F
	0710	323	130710	S3-C3: Spot Report: At 130630 coord (001453) Co K while crossing bridge in route to assigned position had one non-battle casualty. Man fell from bridge. Marine returned to Co K CP. Routine Med Evac requested.	S/F
	0710	324	130710	S3-C3: Spot Report: At 130700 Co M CP counter mortar plan activated during stand to.	S/F
0725		325	130725	PM-L-P3: MA 2, MA 3, LA 2 and LA 1 returned. MP 1 and MP 2 departed.	S/F
	0800	326	130800	S3-C3: Spot Report: At 130800 coord (967448) Co K arrived. Executing mission as set forth in 3/3 operation order 1-67.	S/F
	1020	327	131020	S3-C3: In event weather precludes Phase I Operations being conducted as presently scheduled, I recommend the following: Co K establish Co PB and conduct S&D operation in area bounded by coords (940469) and (975445) until 150730. Phase II operations be conducted as scheduled commencing at 150730.	
	1105	328	131105	S3-C3: SitRep 13-67 as of 131100.	S/F
1105		329	131105	PM-P3: MP 3 departed.	
	1315	330	131315	S3-C3: Spot Report: Refer SR# 130630. Med Evac completed at 131300.	
1400		331	131400	PM-P3: MP 1 returned.	S/F
1420		332	131420	SL-S3: LP 1 returned.	S/F
	1445	333	131445	S3-C3: Spot Report: At 131300 coord (973449) Co K spotted 5 VC along trail from NW dressed in black clothing carrying rifles. VC started moving East. When it was evident VC were not coming into blocking position, Arty mission called. Excellent target coverage, results unknown.	S/F
1500		334	131500	PM-P3: MP 2 returned.	S/F
1620		335	131620	SL-S3: LP 2 returned.	S/F
	1625	336	131625	S3-C3: Spot Report: At 131545 coord (974566) Co M patrol notice 1 enemy at coord (982583) move into a hole and come out. Distance too far to get description. Tanks and Arty mission called on target with excellent target coverage. Results unknown.	S/F
	1640	337	131640	S3-C3: Spot Report: At 131630 coord (971451) Co K established a Co patrol base at above coord. Will conduct patrols during daylight hours and ambushes at night.	S/F

ENCLOSURE (9)

Note: All times H unless  
otherwise indicated.

3d Battalion, 3d Marines

Opened: 130001 Feb 1967

Closed: 132400 Feb 1967

TIME		SSR			ACTION
IN	OUT	#	DTG	MESSAGES, ORDERS, INCIDENTS.	M.S.T.F
1645		338	131645	PM-P3: PM 3 returned.	S/F
	1700	339	131700	S3-C3: SitRep 13-67 as of 131700.	S/F
1805		340	131805	PM-P3: MA 2 and MA 3 departed.	S/F
1830		341	131830	SL-S3: LA 2 departed.	S/F
1845		342	131845	PM-P3: MA 1 departed.	S/F
	1920	343	131920	S3-C3: Spot Report: At 131815 coord (975585) Co M OP observed 3 enemy in dark clothing traveling N.N.W. Due to light and short period of observation could not determine if enemy carried weapons. Arty mission called with excellent target coverage, results unknown.	S/F
1925		344	131925	SL-S3: LA 1 departed.	S/F
	2300	345	132300	S3-C3: SitRep 13-67 as of 132300.	S/F

ENCLOSURE (9)

3d Battalion, 3d Marines

Note: All times H unless  
otherwise indicated.

Opened: 140001 Feb 1967

Closed: 142400 Feb 1967

TIME	SER	DTG	MESSAGES, ORDERS, INCIDENTS.	ACTION
IN	OUT	#		M.S.T.F
	0500	346	140500 S3-C3: SitRep 14-67 as of 140500.	S/F
0645		347	140645 SL-S3: LA 1 returned.	S/F
0655		348	140655 PM-P3: MA 1 returned.	S/F
0700		349	140700 SL-S3: LP 1 departed.	S/F
0720		350	140720 PM-P3: MA 3 returned.	S/F
	0720	351	140720 S3-C3: Spot Report: At 140645 Co K reports all quit. Negative enemy contact. Will continue assigned mission.	S/F
0730		352	140730 PM-P3: MA 2 returned.	S/F
0745		353	140745 SL-S3: LA 2 returned.	S/F
0810		354	140810 PM-P3: MP 2 departed.	S/F
0820		355	140820 PM-P3: MP 3, MP 1 departed.	S/F
0855		356	140855 PK-P3: Do not know status of overall plan, but if possible I recommend that one Plt from Co K go north to right .7 down .0 and then work down draw then continue recon in force to big stream flowing west.	S/F
	0900	357	140900 P3-PK6: Refer your 140855. Request coord of big stream you state running west. Send route you recommend.	S/F
	1030	358	141030 P3-PK6: Establish Co PB coord (954457) as you recommended. Conduct S&D operation in area bounded by coords (940469) and (975445). Primary interest in draw in GS (9645). Main trail and all feeder trails in area. Depart area for Co K CP at 160730.	S/F
	1100	359	141100 S3-C3: SitRep 14-67 as of 141100.	S/F
	1115	360	141115 S3-C3: Spot Report: At 141000 Co K displacing PB. commencing operations as stated in our 131020. Co K instructed to conduct S&D operation in area until 160730.	S/F
1155		361	141155 SL-S3: LP 2 departed.	S/F
	1230	362	141230 S3-C3: Spot Report: At 141115 coord (965566) MP 2 made contact with approximately squad of enemy. Exchange of S/A fire was made with MP 2 having 1 KIA. No more details at present. Communication problems. MP 2 has been directed to break contact with enemy. Due to close proximity of enemy and weather. Unable to use supporting arms. Reaction Plan 3/3 1-67 has been put into effect.	S/F
	1320	363	141320 S3-C3: Spot Report: At 141300 coord (965966) Arty mission called in support of MP 2. Also 40mm used as direct fire in GS (9657). Excellent target coverage, results unknown.	S/F
1400		364	141400 PM-P3: MP 3 returned at 1300.	S/F
1400		365	141400 SL-S3: LP 1 returned.	S/F

ENCLOSURE (9)



Note: All times H unless  
otherwise indicated.

3d Battalion, 3d Marines

Opened: 140001 Feb 1967

Closed: 142100 Feb 1967

TIME		SER	DTG	MESS/AGS, ORDERS, INCIDENTS.	ACTION
IN	OUT	#			M.S.T.F
	1525	366	141525	S3-C3: Spot Report: At 141425 coord (963460) Co K patrol 2 was moving into blocking position. Received S/A fire, but could not observe enemy. Estimated 15 enemy. K2 returned fire and Arty fire mission was called with excellent target coverage. Results unknown.	S/F
	1620	367	141620	Spot Report: See spot report 141230. At 141530 coord 965566) enemy was moving in a NW direction. Due to limited visibility due from weather conditions, unable to get description of enemy. Arty and 40mm mission called with excellent target coverage. MP 2 instructed to return to CP with KIA. Due to steep terrain, could not negotiate with body. Patrol from Co M sent to help MP 2 with body.	S/F
	1700	368	141700	S3-C3: SitRep 14-67 as of 141700.	S/F
1725		369	141725	PM-P3: MP 1 returned.	S/F
	1725	370	141725	S3-C3: Spot Report 141710. Refer SR# 141530. At 141710 coord (974566) MP 2 has returned to Co M CP with KIA. KIA will be evac by surface transportation.	S/F
1735		371	141735	SL-S3: LP 2 returned.	S/F
1750		372	141750	SL-S3: LA 2 departed.	S/F
1800		373	141800	SI-S3: IA 1 departed.	S/F
	1845	374	141845	S3-C3: Spot Report 141830. See SR# 141710. At 141830 coord (974566) During fire fight with enemy. MP 2 had 1 WIA non-Med Evac. Wounded in left leg. Med Evac not required.	S/F
1900		375	141900	PM-P3: MP 2 returned at 1700.	S/F
1915		376	141915	SL-S3: LA 1 departed.	S/F
	2015	377	142015	Spot Report 141700. At 141700 coord (961461) K2 was moving thru draw at above time and coord when they came under A/W fire from an estimated 15 enemy from coord (965462). KA returned fire, called Arty mission and employed unit 60mm mortars. Area was inflected, negative evidence of enemy casualties being caught in fire fight. Signs indicate enemy split into two groups, one moved NW and one moved SE. Further search revealed a cleared area with about 10 new fighting holes coord (961461). K2 will establish PB for tonight. At first light will continue to check trails running into draw. Will search vic of coord (962469). Then will move south to vic of coord (970450) where a PB will be establish for tomorrow night.	S/F

ENCLOSURE (9)



Note: All times H unless  
otherwise indicated.

3d Battalion, 3d Marines

Opened: 140001 Feb 1967

Closed: 142400 Feb 1967

TIME		SER	DTG	MESSAGES, ORDERS, INCIDENTS.	ACTION
IN	OUT	#			M.S.T.F
2020		378	142020	PM-P3: Request MP 1 150730-151400 be cancelled because of tanks and ontos firing in patrol area.	S/F
LE	1955	379	141955	P3-PK6: Establish Co PB. Advise us of location. Move out 1st light. Check draw. Tomorrow work way to R 1.0 down 1.0. Establish Co PB in vic thereof	
	2035	380	142035	P3-PM: Refer your 14 1915 spot report. Cancel MP 1 and MP 2. M2 will be in body armor and helmets and in their holes from stand to until secured by S-3.	
	2040	381	142040	S3-C3: Spot Report 142010. At 142010 coord (962- 461) Co K establish a CO PB.	S/F
2050		382	142050	PM-P3: MA 1 departed at 1800.	
	2300	383	142300	S3-C3: SitRep 14-67 as of 142300.	S/F

ENCLOSURE (9)

3d Battalion, 3d Marines

Note: All times H unless  
otherwise indicated.

Opened: 150001 Feb 1967

Closed: 152400 Feb 1967

TIME		SR	DTG	MESSAGES, ORDERS, INCIDENTS.	CIC
IN	OUT	#			M.S.T.F.
	0500	384	150500	S3-C3: SitRep 15-67 as of 150500.	S/F
0610		385	150610	PM-F3: MA 1 returned.	S/F
0705		386	150705	PM-F3: MA 3 returned.	S/F
0715		387	150715	SL-S3: LA 1 returned.	S/F
0720		388	150720	PM-F3: MA 2 returned.	S/F
0725		389	150725	SI-S3: LA 1 returned.	S/F
0750		390	150750	SL-S3: LA 2 returned.	S/F
0800		391	150800	SI-S3: IP 1 departed.	S/F
	0930	392	150930	S3-C3: Spot Report: At 150925 coord (981542) neutralization fires placed on the Razor Back.	S/F
	1005	393	151005	S3-C3: Spot Report: At 150920 coord (962451) Co K found 3 base camps within a 200 meters radius. Two of the camps were thatched type huts and very old. The third camp was constructed bunkers with mortar pits and fighting holes. Would hold approximately 1 plt. Estimated last occupied 1 week ago. Search made of all camps with negative results. Arty mission will be called when patrol clears area.	S/F
1055		394	151055	SL-S3: LP 2 departed at 0955.	S/F
1100		395	151100	SL-S3: LP 1 departed.	S/F
	1100	396	151100	S3-C3: SitRep 15-67 as of 151100.	S/F
1200		397	151200	PM-F3: MP 3 departed.	S/F
	1310	398	151310	S3-C3: Spot Report: At 151145 coordinates (981-542). 3dBn3dMar ceased artillery neutralization on Razor Back.	S/F
	1540	399	151540	S3-C3: Spot Report: At 151510 coordinates (970450) Co K after many attempts was able to establish radio contact. K6 reports that since his last report he has followed the known trail thru area, it is not in good maintenance and K6 believes that it is no longer a major route. Found 3 bunkers dug into side of a hill, constructed of bamboo poles. Estimated 4 or 5 people spent last night in area. Area checked with neg contact. Bunkers destroyed. Draw in GS (9645). Searched area to present location. Establishing PB and will conduct extensive ambushes during hours of darkness.	S/F
1555		400	151555	SL-S3: LP 2 departed.	S/F
1640		401	151640	SI-S3: IP 1 returned.	S/F
1700		402	151700	PM-F3: MP 3 returned.	S/F
	1730	403	151730	S3-C3: SitRep 15-67 as of 151700.	S/F
1830		404	151830	SL-S3: LA 2 departed.	S/F
	1900	405	151900	S3-C3: Spot Report: Refer to SR# 142015. Co K in assigned position. Established PB. Will conduct night ambushes. Co K will depart PB for CP at 160730.	S/F

ENCLOSURE (9)

Note: All times H unless  
otherwise indicated.

3d Battalion, 3d Marines

Opened: 150001 Feb 1967

Closed: 152400 Feb 1967

TIME		SER	DTG	MESSAGES, ORDERS, INCIDENTS.	ACTION M.S.T.F
IN	OUT	#			
1930		406	151930	SL-S3: LA 1 departed 1800. LA 2 departed 1830.	S/F
1930		407	151930	PM-P3: MA 1 and 2 departed at 1830.	S/F
	2145	408	152145	S3-C3: S3-C3: Spot Report: At 152055 coord (974566). At above time and coord a Marine from Co M manning a listening post had a accidental discharge, wounding himself in the left leg. Routine Med Evac by surface transportation at first light. Investigating Officer has been assigned.	S/F
	2310	409	152310	S3-C3: SitRep 15-67 as of 152300.	S/F

ENCLOSURE (9)

Note: All times H unless  
otherwise indicated.

3d Battalion, 3d Marines

Opened: 160001 Feb 1967

Closed: 162400 Feb 1967

TIME		SER	DTG	MESSAGES, ORDERS, INCIDENTS.	ACTION M.S.T.F
IN	OUT	#			
0001		410	160001	PM-P3: MA 3 departed.	S/F
	0500	411	160500	S3-C3: SitRep 16-67 as of 160500.	S/F
0635		412	160635	PM-P3: MA 3 returned.	S/F
0710		413	160710	PM-P3: MP 3 departed and MA 2 returned.	S/F
0730		414	160730	SL-S3: LA 2 returned.	S/F
0500	LE	415	160500	PM-P3: MA 1 returned.	S/F
0735		416	160735	SL-S3: LA 1 returned.	S/F
	0810	417	160805	S3-C3: Spot Report: At 160800 coord (972448) Co K reports negative contact with enemy. Departing PB at above time and coord for Co K CP.	S/F
0835		418	160835	PM-P3: MP 2 departed.	S/F
0900		419	160900	PM-P3: MP 1 departed.	S/F
0935		420	160935	SL-S3: LP 1 departed.	S/F
	1005	421	160955	S3-C3: Spot Report (Final). At 160950 Coord (974566) Co M Med Evac a non-battle casualty by surface transportation.	S/F
	1055	422	161055	P3-PK: Ontos will remain at your position until further word.	S/F
	1100	423	161100	S3-C3: SitRep 16-67 as of 161100.	S/F
	1230	424	161220	S3-C3: Spot Report: At 161205 Coord (965567) MP 2 spotted 3 enemy moving NW. Distance to great to observe uniform and equipment. Arty mission called with excellent target coverage. Results unknown.	S/F
	1350	425	161350	S3-C3: Spot Report: At 161350 coord (012455) Co K arrived at their CP.	S/F
1445		426	161445	PM-P3: MP 1 and 2 returned.	S/F
1500		427	161500	SI-S3: IP 1 returned at 1255.	S/F
	1555	428	161545	S3-C3: Spot Report: At 161525 coord (980555) Rock File OP observed 3 enemy wearing dark clothing moving NE. 81mm mortar fire mission called; 40mm delivered direct fire; excellent coverage on target; results unknown.	S/F
	1715	429	161710	S3-C3: SitRep 16-67 as of 161700.	S/F
1800		430	161800	SI-S3: LA 2 departed.	S/F
	1805	431	161755	S3-C3: Spot Report: At 161700 coord (980555) Patrol from 3/3 CP searched area where 3 enemy were sighted by Rock File OP. Patrol made neg contact.	S/F
1820		432	161820	PM-P3: MA 2 departed.	S/F
1900		433	161900	PM, L-P3: MA 1 and LA 1 departed.	S/F
	1945	434	161945	S3-C3: Spot Report: At 161930 coords (964573) At above time and coords, PM 2 observed lights on ridge line. Arty mission called with excellent target coverage, light went out	S/F
2020		435	162020	PM-P3: MA 3 departed.	S/F
	2310	436	162310	S3-C3: SitRep 16-67 as of 162300.	S/F

ENCLOSURE (9)



Note: All times H unless  
otherwise indicated.

3d Battalion, 3d Marines  
Opened: 170001 Feb 1967  
Closed: 172400 Feb 1967

TIME		SER	DTG	MESSAGES, ORDERS, INCIDENTS.	ACTION
IN	OUT	#			M.S.T.F
	0500	437	170500	S3-C3: SitRep 17-67 as of 170500.	S/F
0550		438	170550	PM-P3: MA 1 returned.	S/F
0555		439	170555	PM-P3: MA 3 returned.	S/F
0610		440	170610	SL-S3: LA 1 returned.	S/F
0700		441	170700	PM-P3: MA 2 returned.	S/F
0700		442	170700	SL-S3: LA 2 returned.	S/F
	0735	443	170735	P3-PI,K,L,M: H-Hour not 0900.	S/F
0800		444	170800	PM-P3: MP 1 departed.	S/F
0855		445	170855	PK-P3: KP 1 departed.	S/F
1115		446	171115	PM-P3: MP 2 departed.	S/F
	1120	447	171120	S3-C3: SitRep 17-67 as of 171100.	S/F
	1315	448	171315	P3-PK6: Request you send one platoon this CP ASAP.	S/F
	1315	449	171315	P3-C3: Request you send reinforcement elements to this CP.	S/F
	1400	450	171400	S3-C3: Spot Report: At 171342 heli lift commenced.	S/F
	1400	451	171400	S3-C3: Spot Report: At 171352 leading elements of Co I landed. Landing unopposed.	S/F
1420		452	171420	PK-P3: KP 3 returned.	S/F
	1445	453	171440	S3-C3: Last units of Command Group and Co I helilifted at 171440.	S/F
	1600	454	171600	S3-C3: Spot Report: Leading elements of Co L helilift at 171600. Co L commencing operation as set forth in 3/3 Operation Order 1-67.	S/F
1735		455	171735	PM-P3: MP 3 returned.	S/F
1750		456	171750	PM-P3: MP 1 returned.	S/F
1800		457	171800	PM-P3: MP 2 returned.	S/F
1825		458	171825	PM-P3: MA 3 departed.	S/F
1840		459	171840	PH-P3: HA 2 departed.	S/F
1845		460	171845	PM-P3: MA 2 departed at 1825	S/F
1855		461	171855	PM-P3: MA 1 departed.	S/F
1900		462	171900	PH-P3: HA 1 departed.	S/F
1615		463	171615	Info: H/2/2 (-) came under 3/3 OPCON at 171615.	S/F



3d Battalion, 3d Marines

Opened: 180001 Feb 1967

Closed: 182400 Feb 1967

Note: All times H unless  
otherwise indicated.

TIME		SER	DTG	MESSAGES, ORDERS, INCIDENTS	ACTION
IN	OUT	#			M, S, T, F
0600		464	180600	PM-P3: MA 1 returned.	S/F
0620		465	180620	PH-P3: HA 1 returned.	S/F
0650		466	180650	PH, M-P3: HA 2 and MA 3 departed.	S/F
0700		467	180700	PK-P3: KA 3 returned.	S/F
0715		468	180715	PM, K-P3: MA " returned. KP 3 departed.	S/F
0835		469	180835	PM, H-P3: HP1. MP1 departed, MA 2 returned.	S/F
0855		470	180855	PM, H-P3: HP 2 and MP 2 departed.	S/F
0920		471	180920	SM-S3: MP 3 departed.	S/F
1416		472	181416	PM-P3: Patrol changes for 18-19 Feb 67.	S/F
1445		473	181445	PH-P3: HP 1 returned.	S/F
1530		474	181530	PM-P3: MP 1 returned.	S/F
1630		475	181630	PM, K-P3: MP 3, MP 2 and KP 3 returned.	S/F
1700		476	181700	PH-P3: HP 2 returned.	S/F
1800		477	181800	PM, H-P3: HA 2 and MA 1 departed.	S/F
1835		478	181835	PH-P3: HA 1 departed.	S/F
1857		479	181857	PM-P3: MA 3 departed.	S/F
1905		480	181905	PK-P3: KA 1 departed.	S/F
2135		481	182135	S3-C3: Spot Report: At 181425 coord (965569) MP 2 found cave complex containing ammo brass and aiming stake for mortar.	S/F

ENCLOSURE (9)

Note: All times H unless  
otherwise indicated.

3d Battalion, 3d Marines  
Opened: 190001 Feb 1967  
Closed: 192400 Feb 1967

TIME		SER	DTG	MESSAGES, ORDERS, INCIDENTS.	ACTION
IN	OUT	#			M.S.T.F.
0530		482	190530	PK-P3: KA 1 returned.	S/F
0555		483	190555	PH-P3: HA 1 returned.	S/F
0600		484	190600	PM-P3: MA 3 returned.	S/F
0630		485	190630	PM-P3: MA 1 returned.	S/F
0730		486	190730	PM-P3: MP 2 departed.	S/F
0845		487	190845	PM,H,K-P3: MP3, HP1 and KP1 departed.	S/F
0850		488	190850	PM,H-P3: MA 2 and HA 2 returned.	S/F
0930		489	190930	PM-P3: MP 1 departed.	S/F
1000		490	191000	PH-P3: HP 2 departed.	S/F
1410		491	191410	PK-P3: Request patrol activities change for 19Feb67.	S/F
	1410	492	191410	P3-PK: Request denied.	S/F
1515		493	191515	PM-P3: MP 1 returned.	S/F
1550		494	191550	PK-P3: KP 1 returned.	S/F
1610		495	191610	PM-P3: MP 3 returned.	S/F
1800		496	191800	PM-P3: MP 2 returned at 1550.	S/F
1800		497	191800	PH-P3: HP1 returned. HA1,HA2 departed.	S/F
1800		498	191800	PM-P3: MA 1 departed.	S/F
1840		499	191840	PM-P3: MA 2 and MA 3 departed.	S/F
1915		500	191915	PK-P3: KA 1 departed.	S/F

ENCLOSURE (9)

## DECLASSIFIED

Note: All times H unless  
otherwise indicated.

3d Battalion, 3d Marines

Opened: 200001 1967

Closed: 201400 Feb 1967

TIME		SER	DTG	MESSAGES, ORDERS, INCIDENTS.	ACTION
IN	OUT	#			M.S.T.F
0615		501	200615	PM,K,H-P3: KA1,HA1,MA1 returned.	S/F
0635		502	200635	PM-P3: MP 1 departed.	S/F
0640		503	200640	PM,PH-P3: MA 2 and HA 2 returned.	S/F
0645		504	200645	PM-P3: MA 3 returned.	S/F
0850		505	200850	PK-P3: KP 2 departed.	S/F
0905		506	200905	PH-P3: HP 1 departed.	S/F
0910		507	200910	PM-P3: MP 3 departed.	S/F
1000		508	201000	PM-P3: MA 2 returned.	S/F
1545		509	201545	FK,PH-P3: KT 1 and HT 1 returned.	S/F
1605		510	201605	PM-P3: MP 1 returned.	S/F
1640		511	201640	IM-P3: MP 3 returned.	S/F
1800		512	201800	PM-P3: MA 1 departed.	S/F
1805		513	201805	PH-P3: HA 1 departed.	S/F
1820		514	201820	PH-P3: HP 2 returned.	S/F
1830		515	201830	IM-P3: MA 2 departed.	S/F
1843		516	201843	IM-P3: MA 3 departed.	S/F
1925		517	201925	PH-P3: HA 2 departed.	S/F
1950		518	201950	PK-P3: KA 1 departed.	S/F
2030		519	202030	S3-C3: Spot Report: At 202010H coords (979568) a bomb estimated at 250 pounds was dropped on Co M. All personnel in area escaped injury.	S/F

ENCLOSURE (9)

3d Battalion, 3d Marines

Note: All times H unless  
otherwise indicated.

Closed: 2100 Feb 1967

Closed: 212400 Feb 1967

TIME		SER	DTG	MESSAGES, ORDERS, INCIDENTS.	ACTION
IN	OUT	#			M.S.T.F
0550		520	210550	PH-P3: HA 1 returned.	S/F
0620		521	210620	PH-P3: HA 2 returned.	S/F
0650		522	210650	PM-P3: MA 1 returned.	S/F
0750		523	210750	PM-P3: MA 2 returned.	S/F
0805		524	210805	IM,K-P3: MA3, KA1 returned. KA 1 departed.	S/F
0830		525	210830	PM-P3: MF 3 departed.	S/F
0855		526	210855	PM-P3: MF 1 departed.	S/F
0940		527	210940	PM-P3: MT 2 departed.	S/F
1140		528	211140	PK-P3: KP 1 returned.	S/F
1355		529	211355	PM-P3: MF 3 returned.	S/F
1505		530	211505	PM-P3: MP 2 returned.	S/F
	1515	531	211515	S3-C3: Spot Report: At 211505 coords (981542) Co I, L and Command Group returned to 3/3 CP.	S/F
	1710	532	211710	S3-C3: SitRep 21-67 as of 211700.	S/F
1720		533	211720	PM-P3: MF 1 returned.	S/F
1800		534	211800	FM-P3: MA 1 departed.	S/F
1810		535	211810	FM-P3: MA 2 departed.	S/F
1825		536	211835	SI-S3: IA 1 departed.	S/F
1915		537	211915	SL-S3: LA 1 departed.	S/F
1930		538	211930	PM-P3: MA 3 departed.	S/F
2100		539	212100	PK-P3: KA 1 departed.	S/F
	2300	540	212300	S3-C3: SitRep 21-67 as of 212300.	S/F

ENCLOSURE (9)

3d Battalion, 3d Marines

Note: All times H unless  
otherwise indicated.

Opened: 220001 Feb 1967

Closed: 222400 Feb 1967

TIME		SER	DTG	MESSAGES, ORDERS, INCIDENTS.	ACTION M.S.T.F
IN	OUT	#			
	0514	541	220514	S3-C3: SitRep 22-67 as of 220500.	S/F
0600		542	220600	SI-S3: IA 1 returned.	S/F
0650		543	220650	SL-S3: LA 1 returned.	S/F
0700		544	220700	PM,K-P3: MA 1 returned and KP 2 departed.	S/F
0705		545	220705	PK,L-P3: KA 2 returned and LP 1 departed.	S/F
0735		546	220735	PM-P3: MA 3 returned.	S/F
0735		547	220735	SL-S3: LP 2 departed.	S/F
0800		548	220800	SI,M-P3: IP 1 and MP 1 departed.	S/F
0915		549	220915	PM-P3: MP 3 departed.	S/F
	1100	550	221100	S3-C3: SitRep 22-67 as of 221100.	S/F
	1120	551	221110	S3-C3: Spot Report: At 221105 coords (965507) IP 1 was fired on by 1 enemy. Patrol at time could not use supportin weapons due to close proximity.	S/F
	1135	552	221120	S3-C3: Spot Report: At 221135 coords (974566) Co. M had a non-battle casualty, with appendicitis. Med Evac requested and completed at 221120.	S/F
1200		553	221200	PM-P3: MP 2 departed.	S/F
1347		554	221347	PK-P3: KP 2 returned.	S/F
	1445	555	221445	P3-PM: Your request to shoot tanks and ontos is approved.	S/F
1530		556	221530	SL-S3: LP 2 returned.	S/F
1545		557	221545	PM-P3: MP 3 returned.	S/F
1553		558	221553	SL-S3: LP 1 returned.	S/F
1655		559	221655	PM-P3: MP 1 returned.	S/F
1655		560	221655	SI-S3: IA 1 departed.	S/F
1715		561	221715	PM-P3: MP 2 returned.	S/F
	1720	562	221700	S3-C3: SitRep 22-67 as of 221700.	S/F
1755		563	221755	SL-S3: LA 1 and LA 2 departed.	S/F
1755		564	221755	PM-P3: MA 1 and MA 2 departed.	S/F
1810		565	221810	SI-S3: IP 1 returned.	S/F
1900		566	221900	PM-P3: MA 3 departed.	S/F
1920		567	221900	PK-P3: KA 1 departed.	S/F
	2305	568	222300	S3-C3: SitRep 22-67 as of 222300.	S/F
LE 1307		569	221305	S3-C3: Spot Report: At 221300 coords (972516) IP 1 observed 1 VC wearing black clothing, carrying a pack armed with a carbine. Patrol fired upon VC and immediatley started search of the area. Enemy was fleeing in a easterly direction.	S/F

ENCLOSURE (9)



3d Battalion, 3d Marines

Note: All times H unless  
otherwise indicated.

Open ~~230001~~ 230001 1b 1967

Closed: 232400 Feb 1967

TIME		SER	DTG	MESSAGES, ORDERS, INCIDENTS.	ACTION
IN	OUT	#			M.S.T.F
	0500	569A	230500	S3-C3: SitRep 23-67 as of 230500.	S/F
0610		570	230610	SI-S3: IA 1 returned.	S/F
0645		571	230645	PM-P3: MA 1 returned.	S/F
0657		572	230657	PM-P3: MA 3 returned.	S/F
0700		573	230700	PM-P3: MA 2 returned.	S/F
0725		574	230725	SL-S3: LA 1 returned.	S/F
0750		575	230750	SL-S3: LP 1 departed.	S/F
0750		576	230750	SI-S3: IP 1 departed.	S/F
0755		577	230755	PK-P3: KP 1 departed.	S/F
0810		578	230810	SL-S3: LA 2 returned.	S/F
0825		579	230825	PM-P3: MP 1 departed.	S/F
0825		580	230825	SL-S3: LP 2 departed.	S/F
0900		581	230900	PK-P3: KA 1 returned at 0755.	S/F
0900		582	230900	PM-P3: MP 2 departed.	S/F
1000		583	231000	PM-P3: MP 3 departed.	S/F
	1100	584	231100	S3-C3: SitRep 23-67 as of 231100.	S/F
1200		585	231200	PK-P3: KP 1 departed.	S/F
1330		586	231330	PM-P3: MP 1 returned.	S/F
1400		587	231400	PM-P3: MP 2 returned.	S/F
1410		588	231410	SL-S3: LP 1 returned.	S/F
1500		589	231500	SI-S3: IP 1 returned.	S/F
1725		590	231725	PM-P3: MP 3 returned.	S/F
	1740	591	231740	S3-C3: SitRep 23-67 as of 231700.	S/F
1800		592	231800	PM-P3: MA 1 departed.	S/F
1805		593	231805	PM-P3: MA 2 departed.	S/F
1900		594	231900	PM-P3: MA 3 departed.	S/F
1900		595	231900	PE-P3: EA 1 departed.	S/F
1900		596	231900	PE-P3: EA 2 departed.	S/F
1500	LE	597	231500	Echo Co 2d Bn, 3d Marines came under OPCON 3/3.	S/F
	1945	598	231945	P3-PK: Cancel KA 2.	S/F
	2320	599	232310	S3-C3: SitRep 23-67 as of 232300.	S/F

ENCLOSURE (4)

3d Battalion, 3d Marines

Note: All times H unless  
otherwise indicated.

Opened: 240001 Feb 1967

Closed: 242400 Feb 1967

TIME		SER	DTG		MESSAGES, ORDERS, INCIDENTS.	ACTION
IN	OUT	#				M.S.T.F.
	0500	600	240500	S3-C3:	SitRep 24-67 as of 240500	S/F
0600		601	240600	PM-S3:	MA 1 returned.	S/F
0650		602	240650	SE-S3:	EA 1 and EA 2 returned.	S/F
0700		603	240700	PM-P3:	MA2 and MA3 returned.	S/F
0810		604	240810	SE-P3:	EP 1 departed.	S/F
0845		605	240845	PM-P3:	MP 3 departed.	S/F
1045		606	241045	PM-P3:	MP 1 departed.	S/F
	1100	607	241100	S3-C3:	SitRep 24-67 as of 241100	S/F
1200		608	241200	PM-P3:	MP 2 departed.	S/F
1210		609	241210	SE-S3:	EP 1 departed.	S/F
1215		610	241215	SE-S3:	EP 3 departed.	S/F
1420		611	241420	PM-P3:	MP 1 returned.	S/F
1505		612	241505	PM-P3:	MP 2 returned.	S/F
1707		613	241707	PM-P3:	MP 3 returned.	S/F
1707		614	241707	SE-S3:	EP 1 returned.	S/F
1708		615	241708	SE-S3:	EP 3 returned.	S/F
	1730	616	241700	S3-C3:	SitRep 24-67 as of 241700	S/F
1815		617	241815	PM-P3:	MA 1 and MA 3 departed.	S/F
1837		618	241837	SE-S3:	EA 2 departed.	S/F
1856		619	241856	PM-P3:	MA 3 departed.	S/F
1859		620	241859	SE-S3:	EP 1 departed.	S/F
	2300	621	242300	S3-C3:	SitRep 24-67 as of 242300	S/F

ENCLOSURE ( 9 )

3d Battalion, 3d Marines

Note: All times H unless  
otherwise indicated.

Open: 250001 Feb 1967

Closed: 252400 Feb 1967

TIME	SER	DTG	MESSAGES, ORDERS, INCIDENTS.	ACTION M.S.T.F.
0500	622	250500	S3-C3: SitRep 25-67 as of 250500.	S/F
0538	623	250538	SE-S3: EA 1 returned.	S/F
0550	624	250550	PM-P3: MA 1 returned.	S/F
0619	625	250619	SE-S3: EA 2 returned.	S/F
0648	626	250648	PM-P3: MA 2 returned.	S/F
0825	627	250825	PM-P3: MP 3 departed.	S/F
0900	628	250900	PM-P3: MP 1 departed.	S/F
0907	629	250907	SE-S3: EP 1 departed.	S/F
0950	630	250950	PM-P3: MP 1 departed.	S/F
1005	631	251000	S3-C3: Spot Report: At 250915 coords (965579) At above time and coords, MP 1 received approx 3 S/A rds incoming. 81mm mortar mission called with excellent coverage of target. Search of area made with negative results.	S/F
1005	632	251005	SE-S3: EP 2 departed.	S/F
1100	633	251100	S3-C3: SitRep 25-67 as of 251100.	S/F
1155	634	251155	SE-S3: EP 3 departed.	S/F
1245	635	251245	PM-P3: MP 1 returned.	S/F
1430	636	251430	SE-S3: EP 1 returned.	S/F
1500	637	251500	S3-C3: Spot Report: At 252445 coords (968613) At above time and coords Co M OF spotted five enemy moving north towards hill 484. Distance to great to observe clothing and weapons. Arty mission called with excellent target coverage. Results unknown.	S/F
1525	638	251525	PM-P3: MP 3 returned.	S/F
1600	639	251600	SE-S3: EP 2 returned.	S/F
1640	640	251640	PM-P3: MP 2 returned.	S/F
1705	641	251705	S3-C3: SitRep 25-67 as of 251700.	S/F
1752	642	251752	SE-S3: EP 3 returned.	S/F
1826	643	251826	SE-S3: EA 3 departed.	S/F
1835	644	251835	PM-P3: MA 2 departed.	S/F
1855	645	251855	SE-S3: EA 1 departed.	S/F
1855	646	251855	PM-P3: MA 3 departed.	S/F
2145	647	252145	P3-PM6: Scheduled activities for patrols and ambushes for 26Feb67 will go.	S/F
2145	648	252145	I3-PM6: Cancel KI 2 and LA 2 for 26Feb67.	S/F
2300	649	252300	S3-C3: SitRep 25-67 as of 252300.	S/F
2315	650	252315	C3-S3: Cancel my 251200Z Feb67. Execute my Frag Order 10-67 on 26Feb67. H-Har to be announced.	S/F

ENCLOSURE (9)

3d Battalion, 3d Marines

Note: All times H unless  
otherwise indicated.

Opened: 260001 Feb 1967

Closed: 262400 Feb 1967

TIME		SER	DTG	MESSAGES, ORDERS, INCIDENTS.	ACTION M.S.T.F.
IN	OUT	#			
	0500	651	260500	S3-C3: SitRep 26-67 as of 260500.	S/F
C550		652	260550	SE-S3: EA 1 returned.	S/F
C610		653	260610	SE-S3: EA 3 returned.	S/F
C615		654	260615	FM-P3: MA 2 returned.	S/F
C700		655	260700	FM-P3: MA 3 returned.	S/F
C840		656	260840	FM-P3: MF 2 departed.	S/F
C845		657	260845	SE-S3: EP 1 departed.	S/F
C850		658	260850	FM-P3: MF 1 departed.	S/F
1040		659	261040	FM-P3: MF 3 departed at 1000.	S/F
1048		660	261048	SE-S3: EP 2 departed.	S/F
	1100	661	261100	S3-C3: SitRep 26-67 as of 261100.	S/F
1300		662	261100	FM-P3: MF 2 returned.	S/F
1415		663	261415	FM-P3: MF 1 returned.	S/F
1445		664	261445	SE-S3: EP 1 returned.	S/F
	1720	665	261700	S3-C3: SitRep 26-67 as of 261700.	S/F
1725		666	261725	SE-S3: EP 3 returned.	S/F
1730		667	261730	FM-P3: MF 3 returned.	S/F
1825		668	261825	SE-S3: EA 3 departed.	S/F
1850		669	261850	SE-S3: EA 1 departed.	S/F
1855		670	261855	FM-P3: MA 3 departed.	S/F
1955		671	261955	FM-P3: KA 3 departed.	S/F
	2300	672	262300	S3-C3: SitRep 26-67 as of 262300.	S/F

3d Battalion, 3d Marines

Note: All times H unless  
otherwise indicated.

Opened: 270000 Feb 1967

Closed: 272400 Feb 1967

TIME		SER	DTG	MESSAGES, ORDER, INCIDENTS.	ACTION
IN	OUT	#			" . T. F.
0200		673	270200	PK-P3: KA 2 returned.	S/F
	0415	674	270400	S3-C3: Spot Report: At 270400 Co "I" CP. At above time Co "I" commenced search and destroy operation.	S/F
0415		675	270415	PM-P3: MA 3 returned.	S/F
0420		676	270420	PK-P3: KP 2 departed.	S/F
	0500	677	270500	S3-C3: SitRep 27-67 as of 270500.	S/F
	0535	678	270535	S3-C3: Spot Report: At 270530, 3/3 CP. At above time Co "L" and Command Group Alpha departs 3/3 CP commencing search and destroy operations	S/F
0600		679	270600	SE-S3: EA 1 returned.	S/F
0615		680	270615	SE-S3: EA 3 returned.	S/F
0845		681	270845	SE-S3: EP 1 departed.	S/F
1055		682	271055	PM-P3: MP 3 departed.	S/F
1110		683	271110	PK-P3: KP 2 returned.	S/F
1204		684	271204	SE-S3: EP 3 departed.	S/F
1320		685	271320	SE-S3: EP 1 returned.	S/F
1655		686	271655	PM-P3: MP 3 returned.	S/F
1800		687	271800	SE-S3: EP 3 returned.	S/F
1800		688	271800	SE-S3: EA 3 departed.	S/F
1900		689	271900	PM-P3: MA 3 departed.	S/F
1945		690	271945	SE-S3: EA 1 departed.	S/F
2107		691	272107	PK-P3: KP 3 departed.	S/F

ENCLOSURE (9)



**DECLASSIFIED**

Note: All times H unless otherwise indicated.

3d Battalion, 3d Marines  
Opened: 280001 Feb 1967  
Closed: 282400 Feb 1967

TIME		SER			ACTION
IN	OUT	#	DTG	MESSAGES, ORDERS, INCIDENTS.	M.S.T.F.
0300		692	280300	PK-P3: KP 3 returned.	S/F
0630		693	280630	SE-S3: EA 1 returned.	S/F
0700		694	280700	SE-S3: EA 3 returned.	S/F
0735		695	280735	PM-P3: MA 3 returned.	S/F
0805		696	280805	SE-S3: EP 1 departed.	S/F
0905		697	280905	PM-P3: MP 3 departed.	S/F
1015		698	281015	PK-P3: KP 2 departed.	S/F
1200		699	281200	SE-S3: EP 3 departed.	S/F
1255		700	281255	SE-S3: EP 1 returned.	S/F
1325		701	281325	PK-P3: KP 2 returned.	S/F
1600		702	281600	PM-P3: MP 3 returned.	S/F
	1800	703	282800	S3-C3: At 281800 three dog teams were detached from this CP to their parent unit.	S/F
1830		704	281830	SE-Se: EP 3 returned.	S/F
	1900	705	281900	S3-C3: One Plt from Co M arrived this CP at 1900.	S/F
	2030	706	282030	S3-C3: One Plt from Co E/2/3 arrived Co K CP at 2030.	S/F
	2330	707	282330	S3-C3: !Spot Report: At 281930 Gio Lith hamlet the village chief reported a VC Bn moving east on two separate routes (200675) and (200695).	S/F

Note: All times H unless  
otherwise indicated.

3d Battalion, 3d Marines

Opened: 270001 Feb 1967

Closed: 272400 Feb 1967

TIME SER  
IN OUT # DTG MESSAGES, ORDERS, INCIDENTS. ACTION  
M.S.T.F.

3d Battalion, 3d Marines Journal for Search and Destroy Operation -

27 February 1967 - 28 February 1967

0415	1	270400	S3-C3: Spot Report: At 270400 3dBn, 3d Mar commenced search and destroy operation.	S/F
0835	2	270830	P3-Strb 3: Spot Report: At 270755 coords (952563) Co I found 10 small fighting holes and one 3X5 bunker covered with bamboo, bunker destroyed.	S/F
1120	3	271118	P3-Strb 3: At 271110 Co L secured Obj "A".	S/F
1235	4	271235	P3-PL: Since tanks have reached their limit of advance have them expend their ammo on obj "C" and return trying to retrieve flame tank.	S/F
1553	5	271530	P3-Strb 3: Spot Report: At 271500 coords (963575) Co L located cave with two entrances approximately 3 ft wide, 6 ft high and 30 feet long. The following items were discovered: 29-Chicom grenades, 13-82mm mortar rounds, 14-82mm mortar fuzes, 1-footlocker with eating gear, 1-bloody bandage and 6-empty fuze cans, 1 grenade box, 1-bamboo basket. 82mm mortar fuzes will be forwarded to Strb 2 all other gear will be destroyed in place.	S/F
1600	6	271545	P3-Strb 3: Spot Report: At 271500 coords (947558) Co I had one Marine fall hurting knee. Marine has tried but is unable to walk. Will be Med Evac at first opportunity.	
1725	7	271715	P3-Strb 3: Spot Report: At 271705 coords (953572) Co I found one hut 4X4 feet. Hut was destroyed.	S/F
1735	8	271730	P3-Strb 3: Spot Report: At 271720 coords (947583) Co I and Co L secured objective "D".	S/F
1820	9	271810	P3-Strb 3: Spot Report: At 271805 Coords (955577) Co L found 12 fighting holes and a 12X12 hut, 1000 linked 7.62 ammo, 12-unservicable US helmets. Hut, ammo and helmets destroyed.	S/F
1910	10	271900	P3-Strb 3: Co I and Co L set in for the night. Co M plt at coords (962578).	
1955	11	271930	P3-PI,L: Commencing first light Co I be prepared to move to objective Foxtrot on order. Co L be prepared to support Co I.	S/F
2303	12	272300	P3-Strb 3: SitRep 27-67 as of 272300.	S/F

ENCLOSURE (9)

## DECLASSIFIED

Note: All times H unless  
otherwise indicated.

3d Battalion, 3d Marines  
Opened: 280001 Feb 1967  
Closed: 282400 Feb 1967

TIME		SER	DTG	MESSAGES, ORDERS, INCIDENTS.	ACTION
IN	OUT	#			M.S.T.F.
	0500	13	280500	P3-Strb 3: SitRep 28-67 as of 280500.	S/F
	1210	14	281200	P3-Strb 3: Spot Report: At 281040 coords (948583). At above time and coords a Marine from Co L was working on fox hole when blast occurred injuring him. Search of area revealed a second grenade same vicinity with a trip wire attached to it. Med Evac requested.	S/F
	1225	15	281225	P3-Strb 3: SitRep 28-67 as of 281100.	S/F
	1235	16	281230	P3-Strb 3: Spot Report: At 281220 coords (947583). At above time and coords Med Evac was completed. See spot report 281200.	S/F
	1340	17	281340	P3-Strb 3: Spot Report: At 281335 coords (947583). At above time and coords mine of undetermined nature exploded slightly wounding one Marine, Med Evac not requested	S/F
	1400	18	281400	P3-Strb 3: Spot Report: At 281400 coords (965587). At above time and coords the following ordnance and equipment was found in cave: 9 - 82mm mortar rds, 35 - 82mm mortar fuzes, 2 - boxes of 7.62 ammo total of 2000 rds., 22 - Chicom grenades 4 - R.P.C. rockets, 3 - green flare cylinders, 2 - magazines for sub-machine gun, 4000 rds AK-47 ammo, 1-banana clip, bowls and dishes. The cave about 4 ft high, 4 ft wide and 15 ft long with racks built in. Had not been used for a long time. All ordnance and equipment destroyed except for fuzes which will be forwarded to G-2.	S/F
1405		19	281405	Strb 3- P3: Conclude operation Prairie II Frag Order 6-67 and return to 3/3 CP.	
	1835	20	281835	P3-Strb 3: Command Group Alpha, Co I and Co L commenced move by truck to Cam Lo.	S/F
	1930	21	281930	P3-Strb 3: At 281930 Co L arrived at Cam Lo and disembarked.	S/F
	2040	22	282040	P3-Strb 3: At 282040 Cmd Grp "A" and Co I departed 3/3 CP.	S/F
	2040	23	282040	P3-Strb 3: At 282040 coords (140612). At above time and coords Co L established a defensive perimeter. Will hold position until Cmd Grp "A" and Co I join them.	S/F
	2158	24	282158	P3-Strb 3: At 282158 3/3 Cmd Grp and Co I arrived at Cam Lo. Commenced foot march to link up with Co L at (YD 140612).	S/F
	2345	25	282345	P3-Strb 3: At 282345 Cmd Grp "A" Co I linked up with Co L.	S/F

ENCLOSURE (9)

Note: All times H unless  
otherwise indicated.

3d Battalion, 3d Marines  
Opened: 170001 Feb 1967  
Closed: 172400 Feb 1967

TIME	SER				ACTION
IN	OUT	#	DTG	MESSAGES, ORDERS, INCIDENTS.	M.S.T.F.

JOURNAL DURING SEARCH AND DESTROY OPERATION 17-21 FEBRUARY 1967

1615	1	171610	I3-S3: Present position (902502), leading element located trail with hand rail leading north. Located bunker (903506). Will prep fire left area, will check area after fire.	S/F
1625	2	171625	F3-S3: Company Lima troop lift completed at 17005.	S/F
1740	3	171740	F3-S3: Spot Report: At 171700 coords (900504) Co I point observed 3 unarmed VC at approximately 30 meters. Fire was brought to bear. VC ran in a westerly direction through heavy jungle. VC were carrying packs. Point fire team searched area with negative results.	S/F
1759	4	171759	F3-S3: Spot Report: At 171735 coords (921492) Co L found a large base camp. It consists of approximately 30 sleeping bunkers. None were built for fighting. Old batteries and hammocks found in area. It is believed area has not been used in approximately 2 weeks.	S/F
1815	5	171815	F3-S3: Spot Report: At 171815 coords (919494) Co L located base camp approximately same size as last base camp. Has not been in use in past 30 days. 1 AK-47 and 1 Chinese carbine w/folding bayonet, E tools and many blood stained utilities found in area. Area appeared to have been hit by air strike.	S/F
2120	6	172115	F3-S3: Spot Report: At 172100 coords (903507) Command Group and Company I established CP's.	S/F
2300	7	172300	F3-S3: SitRep 17-67 as of 172300.	S/F

ENCLOSURE (2)



Note: All times H unless  
otherwise indicated.

3d Battalion, 3d Marines  
Opened: 180001 Feb 1967  
Closed: 182400 Feb 1967

TIME		SER	DTG	MESSAGES, ORDERS, INCIDENTS.	ACTION
IN	OUT	#			M.S.T.F
	0505	8	180505	P3-S3: SitRep 18-67 as of 180500.	S/F
	0829	9	180800	P3-S3: Spot Report: At 180750H coords (895503) Co India discovered three burial mounds surrounded by freshly cut wood fence. The graves contained 3 bodies(male) wrapped in plastic. Bodies were clothed in black. They were buried 13Jan67 according to head markers. Died of wounds.	S/F
	0835	10	180835	P3-S3: Co Lima commenced northward in accordance with Operation Order 1-67.	S/F
LE	0847	11	180820	I3-S3: Late Entry Spot Report: At 171900 coords (899504) Company India located a small complex of bamboo and palm boughs. It is believed this is the same complex previously reported by Recon. Complex consisted of 2-3 man huts. Complex was searched and destroyed.	S/F
LE	1100	12	181100	I3-S3: SitRep 18-67 as of 181100.	S/F
	1157	13	181145	P3-S3: Spot Report: At 181130 coords (909498) Co Lima located base camp with 10 fighting bunkers. Foot prints in mud indicate area might have been used in the past few days. Bunkers destroyed.	S/F
	1305	14	181240	P3-S3: Spot Report: At 181235 coords (903497) Co Lima located base camp with 30 fighting and living bunkers. It appeared to have been occupied approximately 12 hours ago. It looks like enemy just ate chow and then left area. Bunkers destroyed.	S/F
	1315	15	181250	P3-S3: Spot Report: At 181245 coords (913497) while Co L was destroying base camp. One VC was captured. He was not carrying any weapons. His ruck sack was full of chow. He was dressed in black clothing.	S/F
	1523	16	181510	I3-S3: Spot Report: At 181500 coordinates (903497) Co Lima platoon was moving along trail encountered 1 man, woman and child. Man was captured(VCS) woman and child escaped. Platoon point was then fired on by NVA. Marine was wounded in neck. NVA was brought under fire and killed. Equipment captured 1 Chinese sub-machine gun and 100 lbs of rice. Marine was Med Evac at 181530.	S/F
	1720	17	181700	I3-S3: SitRep 18-67 as of 181700.	S/F

ENCLOSURE (9)



Note: All times H unless  
otherwise indicated.

3d Battalion, 3d Marines  
Opened: 180001 Feb 1967  
Closed: 182400 Feb 1967

IN	OUT	SER #	DTG	MESSAGES, ORDERS, INCIDENTS.	ACTION M.S.T.F.
	1732	18	181730	F3-PL: Company India located at (915516)	S/F
	1955	19	181900	F3-S3: Spot Report: At 181625 coordinates (914514) Co India patrol found an enemy rest area with trenches, fighting holes and tables. Large enough to accomadate 30 to 40 men near stream approximately 2 week old. Search of area made with negative results.	S/F
	2100	20	182045	I3-S3: Spot Report: At 181835 coordinates (903497) A complex of three base camps found all within 100 meters of each other. The following items have been found. 2 new NVA uniforms plus assorted pieces of uniforms, a pack with foreign made map enclosed in plastic, note book with writting. Search revealed a fresh dead body dressed in a gray NVA uniform. Inspection revealed he was killed with S/A	S/F
	2305	21	182300	I3-S3: SitRep 18-67 as of 182300.	S/F

ENCLOSURE (9)

Note: All times H unless  
otherwise indicated.

3d Battalion, 3d Marines  
Opened: 190001 Feb 1967  
Closed: 192400 Feb 1967

TIME		SER	DTG	MESSAGES, ORDERS, INCIDENTS	ACTION
IN	OUT	#			M.S.T.F
	0500	22	190500	P3-S3: SitRep 19-67 as of 190500.	S/F
	1026	23	190920	P3-S3: Spot Report: At 190900 coords (916514) Co I patrol found $\frac{1}{2}$ lb of cooked rice, 1 carbine pouch. Rice estimated to be one day old.	S/F
	0949	24	190940	P3-S3: Spot Report: At 190800 coords (906498) Co L patrol while searching base camp found the following items. 2 82mm mortar tubes, 1 box of demolitions, and 6 Chinese anti-tank rounds. All equipment to be forwarded to G-2.	S/F
	1039	25	191030	P3-S3: At 190950 coords (906498). At above time coords Co L received 3 KIA and 10 WIA's from friendly artillery. Med Evac will be requested when heli zone is cleared.	S/F
	1100	26	191100	P3-S3: SitRep 19-67 as of 191100.	S/F
	1308	27	191230	P3-S3: Spot Report: At 191215 coords (905496) Co L during its search of base camp located 10 crates of assorted ammo and equipment. List of items discovered. 2 complete 82mm mortars, 4 boxes of AT rounds (6 per box). 23 cases Chicom grenades (15 per case). 3 cases of Chicom grenades (10 per case). 3 cases of 82 ammo (6 per case). 5 cases of explosives (100 blocks per case). 12 packs with assorted food, letters and personal gear.	S/F
	1535	28	191515	P3-S3: Spot Report: At 191500 coords (917514) Co I patrol found a series of fighting holes numbering from 200 to 300. Fighting holes approx 1 month old. Search made of area with negative results.	S/F
	1545	29	191525	P3-S3: At 191515 coords (907499). At above time and coords Co L while searching base camp found the following: 25 Chicom grenades, 1 claymore mine, 3 Marine utilities with names. Area still being searched.	S/F
	1657	30	191615	P3-S3: At 191615 coords (914517) Co I patrol has rejoined Co I and Command Group.	S/F
	1717	31	191700	P3-S3: SitRep 19-67 as of 191700.	S/F
	1730	32	191715	P3-S3: Spot Report: At 191615 coords (917508) Co I patrol found a small camp with one heavily fortified fighting hole and 5 foot long tunnel. Area had not been occupied for at least 3 weeks. Area searched with negative results.	S/F
	2305	33	192300	P3-S3: SitRep 19-67 as of 192300.	S/F
	2335	34	192330	P3-S3: Final Spot Report: At 191930 Co L completed search of base camp discovered the following: 1 Chinese carbine, 150 lbs rice in bags. 1000 lbs rice in bin in tunnel complex. Tunnel complex with rice destroyed. Co L set in for the night. All WIA's dry and comfortable.	S/F

ENCLOSURE (9)

## DECLASSIFIED

Note: All times H unless  
otherwise indicated.

3d Battalion, 3d Marines

Opened: 200001 Feb 1967

Closed: 202400 Feb 1967

IN	TIME	OUT	SER	DTG	MESSAGES, ORDERS, INCIDENTS.	ACTION M.S.T.F.
	0500	35		200500	F3-S3: SitRep 20-67 as of 200500.	S/F
	1137	36		201100	F3-S3: SitRep 20-67 as of 201100.	S/F
	1151	37		201125	F3-S3: Spot Report: At 201115 coords (907499) Co L found 3 boxes of explosives totalling 75 lbs. Explosives blown in place. Co L continues to destroy complex.	S/F
	1254	38		201235	F3-S3: Spot Report: At 201235 coords (907499) Co L Med Evac was completed, and 1 VCS captured on 18Feb67.	S/F
	1522	39		201510	F3-S3: Request helicopters at 211030 in lieu of 210930.	S/F
	1635	40		201630	F3-S3: Spot Report: At 201630 coords (915505) Co Lima rejoined Co India and Command Group.	S/F
	1702	41		201700	F3-S3: SitRep 20-67 as of 201700.	S/F
	2301	42		202300	F3-S3: SitRep 20-67 as of 202300.	S/F

ENCLOSURE (2)

Note: All times H unless  
otherwise indicated.

3d Battalion, 3d Marines  
Opened: 210001 Feb 1967  
Closed: 212400 Feb 1967

TIME SER				MESSAGES, ORDERS, INCIDENTS.	ACTION M. S. T. F
IN	OUT	#	DTG		
	0502	43	210500	P3-S3: SitRep 21-67 as of 210500.	S/F
	0750	44	210730	P3-S3: Spot Report: At 210730 coords (915505) leading elements have started moving to HLZ located at (918522) to returned to 3/3 CP.	S/F
	1100	45	211100	P3-S3: SitRep 21-67 as of 211100.	S/F
	1218	46	211215	P3-S3: Spot Report: At 211215 coords (918522) Heli lift started from (918522) to 3/3 CP.	S/F
	1505	47	211510	S3-G3: At 211505 coords (981542). At above time and coordinates Company India, Lima and Command Group returned to 3/3 CP.	S/F

ENCLOSURE (9)



3d Bn, 3d Marines  
Dong Ha, RVN  
051200H Mar 1967

Frags Order 8-67

Refs: (a) Maps: Vietnam, 1:50,000 AMS Series L 7014, Sheet 6342 I and  
Sheet 6341 I  
(b) Bn SOP for logistics and Operation

Time Zone: H

1. Situation.

a. Enemy Forces. See current INTSUNS.

b. Friendly Forces. No change.

2. Mission. To conduct two platoon (-) (Rein) search and clear operation in the vicinity of coordinates Plt Kilo (9452 - 9750); Plt Mike (9760 - 0058).

3. Execution.

a. Concept of operation. As determined by Platoon Commanders.

b. Co K.

(1) At H-Hour on D-Day one Platoon (-) (Rein) depart Company Kilo to conduct a search and clear operation in vicinity of coordinates (9452 - 9750).

c. Co L.

(1) At H-Hour on D-Day one Platoon (-) (Rein) depart Company Mike to conduct a search and clear operation in vicinity of coordinates (9760 - 0058).

d. Coordinating Instructions.

(1) H-Hour 1600H, D-Day 3 March 1967.

(2) Rules of Engagement apply.

(3) Return H-H 081800H March 1967.

- (4) Submit Sitrep every hour and Spot Report as situations occur.
- (5) Report all trails and possible MLZ in area.
- (6) Fire support plan as directed by FO.

**4. Administration and Logistics.**

a. Basic allowance all classes of supply with reference (b) except for the following:

- (1) ~~Three~~ <sup>Two</sup> hand grenades per individual
- (2) Three bandoleers of ammunition per rifleman.
- (3) Six MGI per individual.

**5. Command and Communications/Electronics.**

a. No change.

b. Communication/Electronics in accordance with reference (b).

BY COMMAND OF LIEUTENANT COLONEL CLUDER

S. WERZYNIAK  
Major, U. S. Marine Corps  
Executive Officer

3d Bn, 3d Marines  
 Dong Ha, RVN  
 081430H March 1967

Frag Order 9-67

Refs (a) Map: Vietnam, 1:50,000 AMS Series L7014, Sheet 6342 I Cam Lo  
 (b) Bn SOP for Operation Logistics

Time Zone: H

1. Situation.

a. Enemy Forces. See current INTSUMS.

b. Friendly Forces.

(1) 3rd Bn, 9th Marines conduct search and destroy operation thru the area east of 3d Bn, 3d Marines AO.

(2) 2nd Bn, 94th Artillery USA in general support.

(3) Btry "M", 4th Bn, 12th Marines in general support.

(4) Btry "O", 1st Bn, 40th Artillery USA in general support.

c. Attachments

(1) Engineer squad, 3d Engineer Bn, attached Co "M" effective 1700 D-1.

(2) HST attached Co "M" effective 1700 D-1.

(3) FAC team attached Co "M" effective 1700 D-1.

(4) One Platoon Co "I" attached Co "M" effective 1700 D-1.

2. Mission. 3d Bn, 3d Marines (-) conducts a search and destroy operation in the area shown on Annex G (Operation Overlay).

3. Execution.

a. Concept of Operation.

(1) At H-Hour on D-Day one Rifle Company (-) (Rein) departs CP ; moves overland to vicinity of coordinates (979585); effects link up with Rifle platoon presently operating in that area; continue movement to vicinity of coordinates (000595); establishes Company Patrol Base; conducts search and destroy operation of assigned AO north of EW GL (59); on D+1 moves Company Patrol Base to vicinity of (005585); conducts search and destroy operations of assigned AO north of EW GL (58); on D+2 moves Company Patrol Base to vicinity of coordinates (015575); conducts search and destroy operation of assigned AO north of EW GL (57).

b. Co "M". Execute mission stated in paragraph 3a (1) above.

c. Co "I". Provide one Rifle platoon (Rein) for attachment to Co "M"; be prepared to move in support of Co "M" if so ordered.

d. Co "L". Provide one Rifle platoon and Command Group for movement to Co "M" defensive perimeter; assume responsibility for Co "M" defensive perimeter on arrival.

e. H&S Co. Be prepared to activate Command Group Alpha on order; assume responsibility for designated portions of Battalion CP defensive perimeter on order.

f. Co "K" Continue presently assigned mission.

g. Coordinating Instruction.

(1) D-Day 9 March 1967.

(2) H-Hour 0700H.

(3) FCL is line running from coordinates (000620) thru topographical crest of Dong Ha mountain to coordinates (028570). All fires in support of Co "M" will be restricted to west of this line; all fires in support of 3rd Bn, 9th Marines are restricted to east of this line.

(4) Reference Point for D-Day and D+1 is coordinates (000590); Code name GIRLS.

h. Reports.

(1) Submit overlays of all trails found during operation.

(2) Report all areas which may be used as LZ's to include size, vegetation, and approaches into same.

(3) Submit SitReps every hour on the half hour, submit Spot Reports whenever applicable.

(4) Submit patrol routes and ambush sites 24 hours in advance of activity.

(5) Submit a position report on all platoon size units every half hour.

4. Administration and Logistics.

a. Administration. Casualties will be reported in accordance with Bn SOP.

b. Logistics.

(1) Class I - 6 MCI's per individual.

(2) Class II - as required.

(3) Class V - basic allowance plus 2 bandoleers per rifle man; a minimum of 2000 rounds per machine gun; 4 grenades per individual.

5. Command and Communications/Electronics.

a. Communication/Electronics.

(1) In accordance with reference (b); Company Command Group will carry a RC-292 or the field expedient.

b. Command Post. CO Company "M" will report CP location every half hour.

BY COMMAND OF LIEUTENANT COLONEL WILDER

*S. JAWRZYNIAK*  
Major, U. S. Marine Corps  
Executive Officer

List of Annex:

Annex G (Operation Overlay)

DISTRIBUTION: Special